

Nur für Forschungszwecke

IgM Isotype Control Monoklonaler Antikörper

Katalog-Nr.: CL647-65243



Allgemeine Informationen

Katalog-Nr.: CL647-65243	GenBank-Zugangsnummer: GeneID (NCBI):	Reinigungsmethode: N/A
Größe: 100ug , 200 µg/ml	Vollständiger Name:	CloneNo.: MOPC-104E
Wirt: Maus		Anregungs-/Emissionsmaxima- Wellenlängen: 654 nm / 674 nm
Isotyp: IgM, lambda		

Anwendungen

Geprüfte Anwendungen:
FC
Getestete Reaktivität:

Hintergrundinformationen

Lagerung

Lagerungsbedingungen:
Store at 2-8°C. Avoid exposure to light. Stable for one year after shipment.
Lagerungspuffer:
PBS with 0.09% sodium azide and 0.5% BSA.

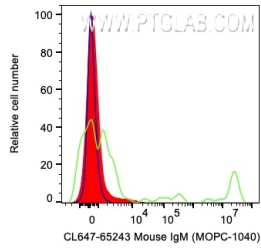
For technical support and original validation data for this product please contact:

T: 1 (888) 4PTGLAB (1-888-478-4522) (toll free
in USA), or 1(312) 455-8498 (outside USA)

E: proteintech@ptglab.com
W: ptglab.com

This product is exclusively available under Proteintech Group brand and is not available to purchase from any other manufacturer.

Ausgewählte Validierungsdaten



1X10⁶ human whole blood cells were surface stained with 0.2 ug CoraLite® Plus 647 Anti-Mouse IgM Isotype Control (red), CoraLite 650 Plus Anti-Human STRO-1 (green), or unstained (blue). Cells were not fixed.