

Nur für Forschungszwecke

# IgG2a Isotype Control Monoklonaler Antikörper



Katalog-Nr.:CL647-65244

## Allgemeine Informationen

**Katalog-Nr.:**  
CL647-65244  
**Größe:**  
100ug , 200 µg/ml  
**Wirt:**  
Maus  
**Isotyp:**  
IgG2a, kappa

**GenBank-Zugangsnummer:**  
**GeneID (NCBI):**  
**Vollständiger Name:**

**Reinigungsmethode:**  
Affinitätsreinigung  
**CloneNo.:**  
MOPC-173  
**Anregungs-/Emissionsmaxima-Wellenlängen:**  
654 nm / 674 nm

## Anwendungen

**Geprüfte Anwendungen:**  
FC  
**Getestete Reaktivität:**

## Hintergrundinformationen

### Lagerung

**Lagerungsbedingungen:**  
Store at 2-8°C. Avoid exposure to light. Stable for one year after shipment.  
**Lagerungspuffer:**  
PBS with 0.09% sodium azide and 0.5% BSA.

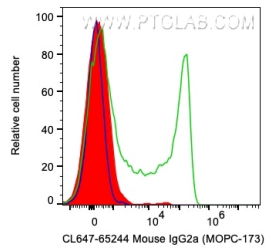
For technical support and original validation data for this product please contact:

T: 1 (888) 4PTGLAB (1-888-478-4522) (toll free in USA), or 1(312) 455-8498 (outside USA)

E: [proteintech@ptglab.com](mailto:proteintech@ptglab.com)  
W: [ptglab.com](http://ptglab.com)

**This product is exclusively available under Proteintech Group brand and is not available to purchase from any other manufacturer.**

## Ausgewählte Validierungsdaten



1X10<sup>6</sup> human PBMCs were surface stained with 0.2 ug CoraLite® Plus 647 Anti-Mouse IgG2a Isotype Control (CL647-65244, Clone: MOPC-173) (red), CoraLite® Plus 647-Conjugated Anti-Human CD8 (green), or unstained (blue). Cells were not fixed. Lymphocytes were gated.