

Nur für Forschungszwecke

6*His, His-Tag Monoklonaler Antikörper

Katalog-Nr.:CL647-66005



Allgemeine Informationen

Katalog-Nr.: CL647-66005	GenBank-Zugangsnummer: GeneID (NCBI):	Reinigungsmethode: Protein-G-Reinigung
Größe: 100ul , Konzentration: 1000 µg/ml von Nanodrop;	Vollständiger Name: Berechnete Masse: 1 kDa	CloneNo.: 1B7G5
Wirt: Maus		Empfohlene Verdünnungen: IF 1:250-1:1000
Isotyp: IgG1		Anregungs-/Emissionsmaxima-Wellenlängen: 654 nm / 674 nm

Anwendungen

Geprüfte Anwendungen: FC (Intra), IF	Positivkontrollen: IF : Transfizierte HEK-293-Zellen,
Getestete Reaktivität: Rekombinantes Protein	

Hintergrundinformationen

Protein tags are protein or peptide sequences located either on the C- or N- terminal of the target protein, which facilitates one or several of the following characteristics: solubility, detection, purification, localization and expression. His-tag is often used for affinity purification and binding assays. Expressed His-tagged proteins can be purified and detected easily because the string of histidine residues binds to several types of immobilized metal ions, including nickel, cobalt and copper, under specific buffer conditions. The His-tag antibody is a useful tool for monitoring of the His-tagged proteins, and recognizes His-tags placed at N-terminal, C-terminal, and internal regions of fusion proteins expressed in bacteria, insect, and mammalian cells.

Lagerung

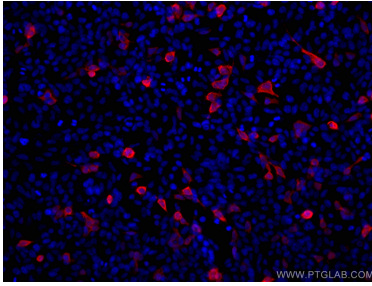
Lagerungsbedingungen:
Bei -20°C lagern. Vor Licht schützen. Nach dem Versand ein Jahr stabil.
Lagerungspuffer:
BS mit 50% Glycerin, 0,05% Proclin300, 0,5% BSA, pH 7,3.
Aliquotieren ist nicht notwendig bei -20°C Lagerung

***** 20ul-Größen enthalten 0.1% BSA**

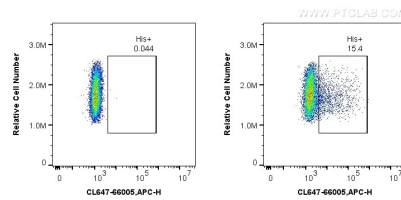
For technical support and original validation data for this product please contact:
T: 1 (888) 4PTGLAB (1-888-478-4522) (toll free in USA), or 1(312) 455-8498 (outside USA)
E: proteintech@ptglab.com
W: ptglab.com

This product is exclusively available under Proteintech Group brand and is not available to purchase from any other manufacturer.

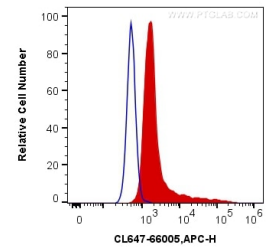
Ausgewählte Validierungsdaten



Immunofluorescent analysis of (-20°C Ethanol) fixed Transfected HEK-293 cells using Coralite® Plus 647-conjugated 6^{*}His, His-Tag antibody (CL647-66005, Clone: 1B7G5) at dilution of 1:500.



1X10⁶ Transfected HEK-293 cells were intracellularly stained with 0.4 ug Coralite® Plus 647 Anti-N/A 6^{*}His, His-Tag (CL647-66005, Clone:1B7G5) (red), or 0.4 ug Control Antibody. Cells were fixed with 4% PFA and permeabilized with Flow Cytometry Perm Buffer (PF00011-C).



1X10⁶ Transfected HEK-293 cells were intracellularly stained with 0.4 ug Coralite® Plus 647 Anti-N/A 6^{*}His, His-Tag (CL647-66005, Clone:1B7G5) (red), or 0.4 ug Control Antibody. Cells were fixed with 4% PFA and permeabilized with Flow Cytometry Perm Buffer (PF00011-C).