

Nur für Forschungszwecke

MCL1 Monoklonaler Antikörper

Katalog-Nr.:CL647-66026

Vorgestelltes Produkt



Allgemeine Informationen

Katalog-Nr.: CL647-66026	GenBank-Zugangsnummer: BC107735	Reinigungsmethode: Protein-A-Reinigung
Größe: 100ul , Konzentration: 1000 µg/ml von4170 Nanodrop;	GeneID (NCBI): 4170	CloneNo.: 1E3C2
Wirt: Maus	Vollständiger Name: myeloid cell leukemia sequence 1 (BCL2-related)	Anregungs-/Emissionsmaxima- Wellenlängen: 654 nm / 674 nm
Isotyp: IgG2b	Berechnete Masse: 350 aa, 37 kDa	
Immunogen Katalognummer: AG10609		

Anwendungen

Geprüfte Anwendungen:
FC (Intra)

Getestete Reaktivität:
Human

Hintergrundinformationen

MCL-1 is an anti-apoptotic member of the Bcl-2 family originally isolated from the ML-1 human myeloid leukemia cell line. Similar to BCL2 and BCL2L1, MCL1 can interact with BAX and/or BAK1 to inhibit mitochondria-mediated apoptosis. Mcl-1 is critical for the proliferation and survival of myeloma cells in vitro, and overexpression of Mcl-1 protein in myeloma cells is associated with relapse and short event-free survival in multiple myeloma patients. Recent studies show that MCL-1 is upregulated in numerous haematological and solid tumour malignancies. Therefore, MCL-1 has been suggested as a potential new therapeutic target.

Lagerung

Lagerungsbedingungen:
Bei -20°C lagern. Vor Licht schützen. Nach dem Versand ein Jahr stabil.

Lagerungspuffer:
BS mit 50% Glycerin, 0,05% Proclin300, 0,5% BSA, pH 7,3.

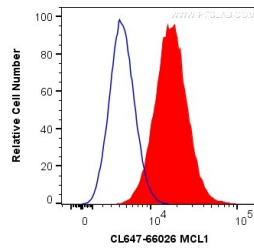
Aliquotieren ist nicht notwendig bei -20°C Lagerung

*** 20ul-Größen enthalten 0.1% BSA

For technical support and original validation data for this product please contact:
T: 1 (888) 4PTGLAB (1-888-478-4522) (toll free in USA), or 1(312) 455-8498 (outside USA)
E: proteintech@ptglab.com
W: ptglab.com

This product is exclusively available under Proteintech Group brand and is not available to purchase from any other manufacturer.

Ausgewählte Validierungsdaten



1X10⁶ HeLa cells were intracellularly stained with 0.2 ug Coralite® Plus 647 Anti-Human MCL1 (CL647-66026, Clone:1E3C2) (red), or 0.2 ug Control Antibody (blue). Cells were fixed with 4% PFA.