

Nur für Forschungszwecke

Alpha Tubulin Monoklonaler Antikörper

Katalog-Nr.:CL647-66031



Allgemeine Informationen

Katalog-Nr.: CL647-66031	GenBank-Zugangsnummer: BC009314	Reinigungsmethode: Protein-A-Reinigung
Größe: 100ul , Konzentration: 1000 µg/ml von10376 Nanodrop;	GeneID (NCBI): 10376	CloneNo.: 1E4C11
Wirt: Maus	Vollständiger Name: tubulin, alpha 1b	Empfohlene Verdünnungen: IF 1:50-1:500
Isotyp: IgG2b	Berechnete Masse: 50 kDa	Anregungs-/Emissionsmaxima-Wellenlängen: 654 nm / 674 nm
Immunogen Katalognummer: AG18034	Beobachtete Masse: 50-55 kDa	

Anwendungen

Geprüfte Anwendungen: FC (Intra), IF	Positivkontrollen: IF : HeLa-Zellen,
Getestete Reaktivität: Human, Hund, Maus, Ratte	

Hintergrundinformationen

There are five tubulins in human cells: alpha, beta, gamma, delta, and epsilon. Tubulins are conserved across species. They form heterodimers, which multimerize to form a microtubule filament. An alpha and beta tubulin heterodimer is the basic structural unit of microtubules. The heterodimer does not come apart once formed. The alpha and beta tubulins, which are each about 55 kDa MW, are homologous but not identical. Alpha tubulin is useful for scientists across fields as an internal control due to its high, ubiquitous expression pattern. Tubulin expression may vary according to resistance to antimicrobial and antimitotic drugs. This antibody specifically recognizes Tubulin Alpha.

Lagerung

Lagerungsbedingungen:
Bei -20°C lagern. Vor Licht schützen. Nach dem Versand ein Jahr stabil.
Lagerungspuffer:
BS mit 50% Glycerin, 0,05% Proclin300, 0,5% BSA, pH 7,3.
Aliquotieren ist nicht notwendig bei -20°C Lagerung

*** 20ul-Größen enthalten 0.1% BSA

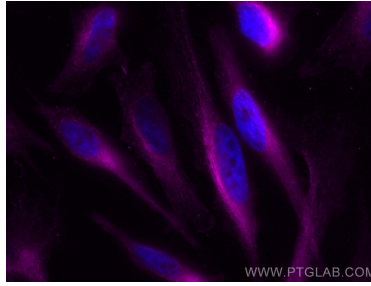
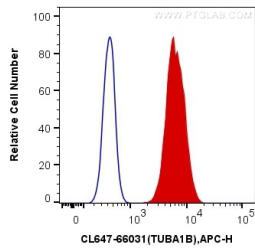
For technical support and original validation data for this product please contact:

T: 1 (888) 4PTGLAB (1-888-478-4522) (toll free in USA), or 1(312) 455-8498 (outside USA)

E: proteintech@ptglab.com
W: ptglab.com

This product is exclusively available under Proteintech Group brand and is not available to purchase from any other manufacturer.

Ausgewählte Validierungsdaten



1×10^6 HepG2 cells were intracellularly stained with 0.4 μg CoraLite® Plus 647 Anti-Human Alpha Tubulin (CL647-66031, Clone:1E4C11) (red), or 0.4 μg Control Antibody. Cells were fixed with 4% PFA and permeabilized with Flow Cytometry Perm Buffer (PF00011-C).

Immunofluorescent analysis of (4% PFA) fixed HeLa cells using CoraLite® Plus 647 Alpha Tubulin antibody (CL647-66031, Clone: 1E4C11) at dilution of 1:200.