

Nur für Forschungszwecke

# CPT1A Monoklonaler Antikörper

Katalog-Nr.:CL647-66039



## Allgemeine Informationen

<b>Katalog-Nr.:</b> CL647-66039	<b>GenBank-Zugangsnummer:</b> BC000185	<b>Reinigungsmethode:</b> Protein-A-Reinigung
<b>Größe:</b> 100ul , Konzentration: 1000 µg/ml von1374 Nanodrop;	<b>GeneID (NCBI):</b> 1374	<b>CloneNo.:</b> 5D8G9
<b>Wirt:</b> Maus	<b>Vollständiger Name:</b> carnitine palmitoyltransferase 1A (liver)	<b>Anregungs-/Emissionsmaxima- Wellenlängen:</b> 654 nm / 674 nm
<b>Isotyp:</b> IgG2a	<b>Berechnete Masse:</b> 88 kDa	
<b>Immunogen Katalognummer:</b> AG7745	<b>Beobachtete Masse:</b> 86 kDa	

## Anwendungen

**Geprüfte Anwendungen:**  
FC (Intra)

**Getestete Reaktivität:**  
Human, Maus, Ratte

## Hintergrundinformationen

CPT1A, also named as CPT1, CPT1-L and L-CPTI, belongs to the carnitine/choline acetyltransferase family. Carnitine palmitoyltransferase (CPT) deficiencies are common disorders of mitochondrial fatty acid oxidation. The CPT system is made up of two separate proteins located in the outer (CPT1) and inner (CPT2) mitochondrial membranes. CPT1A is an active forms of related liver-type carnitine palmitoyltransferase I. (PMID: 11001805). CPT1A deficiency presents as recurrent attacks of fasting hypoketotic hypoglycemia. (PMID: 15363638). This antibody can bind the close sequences genes.

## Lagerung

**Lagerungsbedingungen:**  
Bei -20°C lagern. Vor Licht schützen.  
**Lagerungspuffer:**  
BS mit 50% Glycerin, 0,05% Proclin300, 0,5% BSA, pH 7,3.  
**Aliquotieren ist nicht notwendig bei -20°C Lagerung**

**\*\*\* 20ul-Größen enthalten 0.1% BSA**

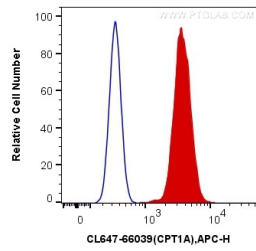
For technical support and original validation data for this product please contact:

T: 1 (888) 4PTGLAB (1-888-478-4522) (toll free  
in USA), or 1(312) 455-8498 (outside USA)

E: [proteintech@ptglab.com](mailto:proteintech@ptglab.com)  
W: [ptglab.com](http://ptglab.com)

**This product is exclusively available under Proteintech Group brand and is not available to purchase from any other manufacturer.**

## Ausgewählte Validierungsdaten



$1 \times 10^6$  HeLa cells were intracellularly stained with 0.2  $\mu$ g Coralite® Plus 647 Anti-Human CPT1A (CL647-66039, Clone:5D8G9) (red), or 0.2  $\mu$ g Control Antibody. Cells were fixed and permeabilized with Transcription Factor Staining Buffer Kit (PF00011).