

Nur für Forschungszwecke

Lamin B1 Monoklonaler Antikörper

Katalog-Nr.:CL647-66095

Vorgestelltes Produkt

1 Publikationen



Allgemeine Informationen

Katalog-Nr.: CL647-66095	GenBank-Zugangsnummer: BC012295	Reinigungsmethode: Protein-G-Reinigung
Größe: 100ul , Konzentration: 2000 µg/ml von4001 Nanodrop;	GeneID (NCBI): Vollständiger Name: lamin B1	CloneNo.: 3C10G12
Wirt: Maus	Berechnete Masse: 66 kDa	Empfohlene Verdünnungen: IF 1:50-1:500
Isotyp: IgG1	Beobachtete Masse: 66-70 kDa	Anregungs-/Emissionsmaxima-Wellenlängen: 654 nm / 674 nm
Immunogen Katalognummer: AG20522		

Anwendungen

Geprüfte Anwendungen: FC (Intra), IF	Positivkontrollen: IF : HepG2-Zellen,
In Publikationen genannte Anwendungen: IF	
Getestete Reaktivität: Human, Maus, Ratte	
Zitierte Arten: Human	

Hintergrundinformationen

Lamins are components of the nuclear lamina, a fibrous layer on the nucleoplasmic side of the inner nuclear membrane, which is thought to provide a framework for the nuclear envelope and may also interact with chromatin. The nuclear lamina consists of a two-dimensional matrix of proteins located next to the inner nuclear membrane. The lamin family of proteins make up the matrix and are highly conserved in evolution. During mitosis, the lamina matrix is reversibly disassembled as the lamin proteins are phosphorylated. Vertebrate lamins consist of two types, A and B. This gene encodes one of the two B type proteins, B1. This protein is not suitable for samples where the nuclear envelope has been removed.

Bemerkenswerte Veröffentlichungen

Verfasser	Pubmed ID	Journal	Anwendung
Banafsheh Golchoubian	34874453	J Cell Biol	IF

Lagerung

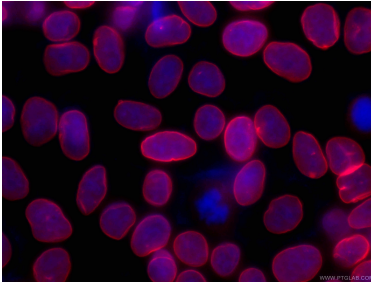
Lagerungsbedingungen:
Bei -20°C lagern. Vor Licht schützen. Nach dem Versand ein Jahr stabil.
Lagerungspuffer:
BS mit 50% Glycerin, 0,05% Proclin300, 0,5% BSA, pH 7,3.
Aliquotieren ist nicht notwendig bei -20°C Lagerung

*** 20ul-Größen enthalten 0.1% BSA

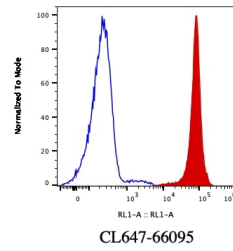
For technical support and original validation data for this product please contact:
T: 1 (888) 4PTGLAB (1-888-478-4522) (toll free in USA), or 1(312) 455-8498 (outside USA)
E: proteintech@ptglab.com
W: ptglab.com

This product is exclusively available under Proteintech Group brand and is not available to purchase from any other manufacturer.

Ausgewählte Validierungsdaten



Immunofluorescent analysis of (-20°C Ethanol) fixed HepG2 cells using CL647-66095 (Lamin B1 antibody) at dilution of 1:100.



1X10⁶ HeLa cells were stained with 0.2 ug CoraLite® Plus 647 Anti-Human Lamin B1 (CL647-66095, Clone: 3C10G12) (red), or 0.2 ug CoraLite® Plus 647 Mouse IgG1 Isotype Control (CL647-66360, Clone: T1F8D3F10) (blue). Cells were fixed and permeabilized with Transcription Factor Staining Buffer Kit (PF00011).