

Nur für Forschungszwecke

HBE1-Specific Monoklonaler Antikörper

Katalog-Nr.:CL647-66151



Allgemeine Informationen

Katalog-Nr.: CL647-66151	GenBank-Zugangsnummer: NM_005330	Reinigungsmethode: Protein-G-Reinigung
Größe: 100ul , Konzentration: 1000 µg/ml von3046	GeneID (NCBI): 3046	CloneNo.: 2C11G6
Nanodrop;	Vollständiger Name: hemoglobin, epsilon 1	Anregungs-/Emissionsmaxima-Wellenlängen: 654 nm / 674 nm
Wirt: Maus	Beobachtete Masse: 16 kDa	
Isotyp: IgG1		

Anwendungen

Geprüfte Anwendungen:
FC (Intra)

Getestete Reaktivität:
Human

Hintergrundinformationen

The hemoglobin molecule is a tetramer consisting of two α -globin-like polypeptide chains and two β -globin-like chains. The human hemoglobin genes are expressed in a tightly developmentally controlled fashion. ϵ -globin (HBE1) is the predominantly expressed gene during the embryonic stage. The epsilon hemoglobin chain seems to be the best marker for fetal nucleated red blood cells (NRBCs). Anti-HBE1 may be used to label and isolate fetal cells from maternal blood and can be useful in prenatal diagnosis. This antibody specifically recognizes the HBE1 and doesn't cross-react with other globin chains.

Lagerung

Lagerungsbedingungen:
Bei -20°C lagern. Vor Licht schützen. Nach dem Versand ein Jahr stabil.
Lagerungspuffer:
BS mit 50% Glycerin, 0,05% Proclin300, 0,5% BSA, pH 7,3.
Aliquotieren ist nicht notwendig bei -20°C Lagerung

***** 20ul-Größen enthalten 0.1% BSA**

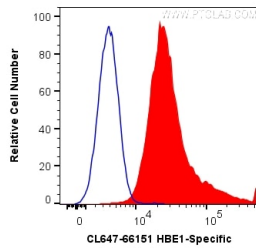
For technical support and original validation data for this product please contact:

T: 1 (888) 4PTGLAB (1-888-478-4522) (toll free in USA), or 1(312) 455-8498 (outside USA)

E: proteintech@ptglab.com
W: ptglab.com

This product is exclusively available under Proteintech Group brand and is not available to purchase from any other manufacturer.

Ausgewählte Validierungsdaten



1X10⁶ K-562 cells were intracellularly stained with 0.2 ug CoraLite® Plus 647 Anti-Human HBE1-Specific (CL647-66151, Clone:2C11G6) (red), or 0.2 ug isotype control (blue). Cells were fixed with 4% PFA and permeabilized with Flow Cytometry Perm Buffer (PF00011-C).