

Nur für Forschungszwecke

human IgM Monoklonaler Antikörper

Katalog-Nr.:CL647-66484



Allgemeine Informationen

Katalog-Nr.: CL647-66484	GenBank-Zugangsnummer: BC009851	Reinigungsmethode: Protein-G-Reinigung
Größe: 100ul , Konzentration: 1000 µg/ml von3507 Nanodrop;	GeneID (NCBI): 3507	CloneNo.: 2D10B10
Wirt: Maus	Vollständiger Name: immunoglobulin heavy constant mu	Empfohlene Verdünnungen: IF 1:50-1:500
Isotyp: IgG1	Berechnete Masse: 69 kDa	Anregungs-/Emissionsmaxima-Wellenlängen: 654 nm / 674 nm
Immunogen Katalognummer: AG1459		

Anwendungen

Geprüfte Anwendungen: IF	Positivkontrollen: IF : humanes Tonsillitisgewebe,
Getestete Reaktivität: Human	

Hintergrundinformationen

IGHM is the constant region of heavy chain of IgM. IgM is the first immunoglobulin expressed during B cell development. IgM antibodies play an important role in primary immune response involved in early recognition of external invaders like bacteria and viruses, cellular waste and modified self, as well as in recognition and elimination of precancerous and cancerous lesions. The μ heavy chain disease is a rare lymphoproliferative disorder. Human immunoglobulin heavy chain locus translocations are associated with leukaemias and lymphomas, including multiple myeloma, mantle cell lymphoma, Burkitt's lymphoma and diffuse large B cell lymphoma. This antibody detects the heavy chain of human IgM (~75 kDa).

Lagerung

Lagerungsbedingungen:
Bei -20°C lagern. Vor Licht schützen.
Lagerungspuffer:
BS mit 50% Glycerin, 0,05% Proclin300, 0,5% BSA, pH 7,3.
Aliquotieren ist nicht notwendig bei -20°C Lagerung

*** 20ul-Größen enthalten 0.1% BSA

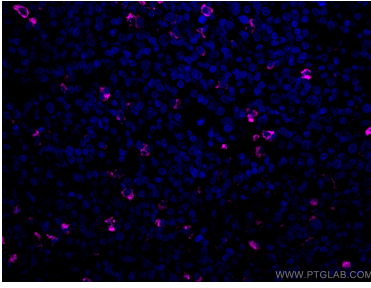
For technical support and original validation data for this product please contact:

T: 1 (888) 4PTGLAB (1-888-478-4522) (toll free in USA), or 1(312) 455-8498 (outside USA)

E: proteintech@ptglab.com
W: ptglab.com

This product is exclusively available under Proteintech Group brand and is not available to purchase from any other manufacturer.

Ausgewählte Validierungsdaten



Immunofluorescent analysis of (4% PFA) fixed human tonsillitis tissue using CoraLite® Plus 647 human IgM antibody (CL647-66484, Clone: 2D10B10) at dilution of 1:100.