

Nur für Forschungszwecke

# Bcl2 Monoklonaler Antikörper

Katalog-Nr.:CL647-66799



## Allgemeine Informationen

<b>Katalog-Nr.:</b> CL647-66799	<b>GenBank-Zugangsnummer:</b> NM-009741	<b>Reinigungsmethode:</b> Protein-G-Reinigung
<b>Größe:</b> 100ul , Konzentration: 1000 µg/ml von12043	<b>GeneID (NCBI):</b> 12043	<b>CloneNo.:</b> 1B5B9
<b>Nanodrop;</b>	<b>Vollständiger Name:</b> B-cell leukemia/lymphoma 2	<b>Anregungs-/Emissionsmaxima-Wellenlängen:</b> 654 nm / 674 nm
<b>Wirt:</b> Maus	<b>Berechnete Masse:</b> 26 kDa	
<b>Isotyp:</b> IgG1	<b>Beobachtete Masse:</b> 26 kDa	
<b>Immunogen Katalognummer:</b> AG24261		

## Anwendungen

**Geprüfte Anwendungen:**  
FC (Intra)

**Getestete Reaktivität:**  
Maus

## Hintergrundinformationen

Bcl2 is a member of the B cell lymphoma 2 protein family. Members of this family regulate cell death in multiple cell types and can have either proapoptotic or antiapoptotic activities. The protein encoded by this gene inhibits mitochondrial-mediated apoptosis. This protein is an integral outer mitochondrial membrane protein that functions as part of signaling pathway that controls mitochondrial permeability in response to apoptotic stimuli. This protein may also play a role in neuron cell survival and autophagy. Abnormal expression and chromosomal translocations of this gene are associated with cancer progression in numerous tissues.

## Lagerung

**Lagerungsbedingungen:**  
Bei -20°C lagern. Vor Licht schützen. Nach dem Versand ein Jahr stabil.

**Lagerungspuffer:**  
BS mit 50% Glycerin, 0,05% Proclin300, 0,5% BSA, pH 7,3.

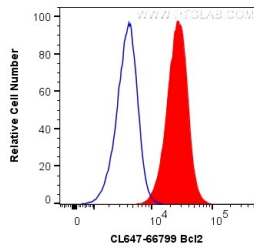
**Aliquotieren ist nicht notwendig bei -20°C Lagerung**

**\*\*\* 20ul-Größen enthalten 0.1% BSA**

For technical support and original validation data for this product please contact:  
T: 1 (888) 4PTGLAB (1-888-478-4522) (toll free in USA), or 1(312) 455-8498 (outside USA)      E: proteintech@ptglab.com  
W: ptglab.com

**This product is exclusively available under Proteintech Group brand and is not available to purchase from any other manufacturer.**

## Ausgewählte Validierungsdaten



1X10<sup>6</sup> NIH/3T3 cells were intracellularly stained with 0.2 ug CoraLite® Plus 647 Anti-Mouse Bcl2 (CL647-66799, Clone:1B5B9) (red), or 0.2 ug APC-65128; APC Mouse IgG2b Isotype Control (APC-65128, Clone: MPC-11) (blue). Cells were fixed with 4% PFA and permeabilized with Flow Cytometry Perm Buffer (PF00011-C).