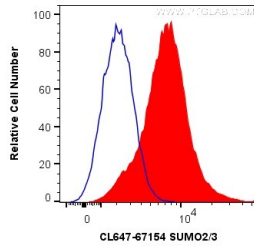


Ausgewählte Validierungsdaten



1X10⁶ K-562 cells were intracellularly stained with 0.2 μ g CoraLite[®] Plus 647 Anti-Human SUMO2/3 (CL647-67154, Clone:1A1B3) (red), or 0.2 μ g isotype control (blue). Cells were fixed and permeabilized with Transcription Factor Staining Buffer Kit (PF00011).