

Nur für Forschungszwecke

ERP29 Monoklonaler Antikörper

Katalog-Nr.:CL647-67675



Allgemeine Informationen

Katalog-Nr.: CL647-67675	GenBank-Zugangsnummer: BC101495	Reinigungsmethode: Protein-A-Reinigung
Größe: 100ul, Konzentration: 1000 µg/ml von10961	GeneID (NCBI): 10961	CloneNo.: 1H8B2
Nanodrop;	Vollständiger Name: endoplasmic reticulum protein 29	Empfohlene Verdünnungen: IF 1:50-1:500
Wirt: Maus	Berechnete Masse: 261 aa, 29 kDa	Anregungs-/Emissionsmaxima-Wellenlängen: 654 nm / 674 nm
Isotyp: IgG2a	Beobachtete Masse: 29 kDa	
Immunogen Katalognummer: AG30262		

Anwendungen

Geprüfte Anwendungen: IF	Positivkontrollen: IF : humanes Nierengewebe,
Getestete Reaktivität: Human, Maus, Ratte	

Hintergrundinformationen

Endoplasmic reticulum resident protein 29 (ERP29) is a 29-kDa endoplasmic reticulum (ER) luminal protein. Structurally ERp29 is related to protein disulfide isomerases (PDI). However, it lacks the thioredoxin motif, suggesting that this protein does not function as a disulfide isomerase (PMID: 15500441). ERP29 plays an important role in the processing of secretory proteins within the (ER), possibly by participating in the folding of proteins in the ER. The secretion of thyroglobulin (TG) was found to be strongly regulated by ERP29 (PMID: 16380091).

Lagerung

Lagerungsbedingungen:
Bei -20°C lagern. Vor Licht schützen.
Lagerungspuffer:
BS mit 50% Glycerin, 0,05% Proclin300, 0,5% BSA, pH 7,3.
Aliquotieren ist nicht notwendig bei -20°C Lagerung

***** 20ul-Größen enthalten 0.1% BSA**

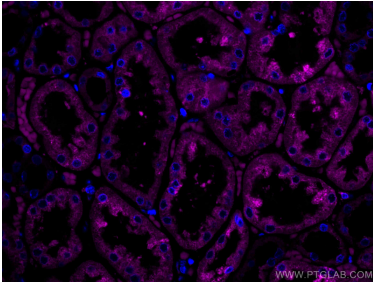
For technical support and original validation data for this product please contact:

T: 1 (888) 4PTGLAB (1-888-478-4522) (toll free in USA), or 1(312) 455-8498 (outside USA)

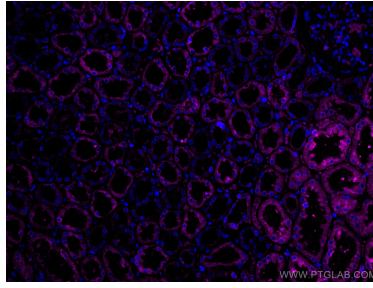
E: proteintech@ptglab.com
W: ptglab.com

This product is exclusively available under Proteintech Group brand and is not available to purchase from any other manufacturer.

Ausgewählte Validierungsdaten



Immunofluorescent analysis of (4% PFA) fixed human kidney tissue using CoraLite® Plus 647 ERP29 antibody (CL647-67675, Clone: 1H8B2) at dilution of 1:200.



Immunofluorescent analysis of (4% PFA) fixed human kidney tissue using CoraLite® Plus 647 ERP29 antibody (CL647-67675, Clone: 1H8B2) at dilution of 1:200.