

Nur für Forschungszwecke

# Cyclin B2 Monoklonaler Antikörper

Katalog-Nr.:CL647-67726



## Allgemeine Informationen

<b>Katalog-Nr.:</b> CL647-67726	<b>GenBank-Zugangsnummer:</b> BC105086	<b>Reinigungsmethode:</b> Protein-A-Reinigung
<b>Größe:</b> 100ul , Konzentration: 1000 µg/ml von9133	<b>GeneID (NCBI):</b> von9133	<b>CloneNo.:</b> 2G8B7
<b>Nanodrop;</b>	<b>Vollständiger Name:</b> cyclin B2	<b>Empfohlene Verdünnungen:</b> IF 1:50-1:500
<b>Wirt:</b> Maus	<b>Berechnete Masse:</b> 398 aa, 45 kDa	<b>Anregungs-/Emissionsmaxima-Wellenlängen:</b> 654 nm / 674 nm
<b>Isotyp:</b> IgG2a		
<b>Immunogen Katalognummer:</b> AG16329		

## Anwendungen

<b>Geprüfte Anwendungen:</b> IF	<b>Positivkontrollen:</b> IF : Maushodengewebe,
<b>Getestete Reaktivität:</b> Human, Maus	

## Hintergrundinformationen

Cyclin B2 (CCNB2) is a member of cyclin family proteins, which regulate the activities of cyclin dependent kinases (CDKs) and different cyclins function spatially and temporally in specific phases of the cell cycle. Cyclin B2 serves a key role in progression of G2/M transition. Cyclin B2 has been found to be up-regulated in a variety of human cancers, such as adrenocortical carcinoma, breast carcinoma, colorectal adenocarcinoma, pituitary adenoma and gastric cancer. The aberrant expression of Cyclin B2 deregulates spindle checkpoints in the cell cycle and results in chromosomal instability (CIN), one of the signature phenotypes of most cancers. Moreover, serum circulating Cyclin B2 mRNA expression has been found increased in cancer patients and associated with cancer stage and metastasis status.

## Lagerung

**Lagerungsbedingungen:**  
Bei -20°C lagern. Vor Licht schützen.  
**Lagerungspuffer:**  
BS mit 50% Glycerin, 0,05% Proclin300, 0,5% BSA, pH 7,3.  
**Aliquotieren ist nicht notwendig bei -20°C Lagerung**

**\*\*\* 20ul-Größen enthalten 0.1% BSA**

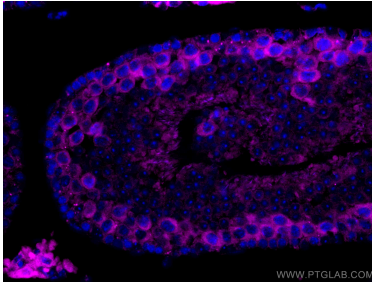
For technical support and original validation data for this product please contact:

T: 1 (888) 4PTGLAB (1-888-478-4522) (toll free in USA), or 1(312) 455-8498 (outside USA)

E: [proteintech@ptglab.com](mailto:proteintech@ptglab.com)  
W: [ptglab.com](http://ptglab.com)

**This product is exclusively available under Proteintech Group brand and is not available to purchase from any other manufacturer.**

## Ausgewählte Validierungsdaten



Immunofluorescent analysis of (4% PFA) fixed mouse testis tissue using CoraLite® Plus 647 Cyclin B2 antibody (CL647-67726, Clone: 2G8B7) at dilution of 1:200.