

Nur für Forschungszwecke

smooth muscle actin specific Monoklonaler Antikörper



Katalog-Nr.:CL647-67735

Allgemeine Informationen

Katalog-Nr.: CL647-67735	GenBank-Zugangsnummer: NM_001613	Reinigungsmethode: Protein-G-Reinigung
Größe: 100ul , Konzentration: 1000 µg/ml von59 Nanodrop;	GeneID (NCBI): 59	CloneNo.: 1E9A11
Wirt: Maus	Vollständiger Name: actin, alpha 2, smooth muscle, aorta	Empfohlene Verdünnungen: IF 1:50-1:500
Isotyp: IgG1	Berechnete Masse: 42 kDa	Anregungs-/Emissionsmaxima- Wellenlängen: 654 nm / 674 nm
	Beobachtete Masse: 42 kDa	

Anwendungen

Geprüfte Anwendungen: FC (Intra), IF	Positivkontrollen: IF : Mausherzgewebe,
Getestete Reaktivität: Hausschwein, Human, Maus, Ratte	

Hintergrundinformationen

ACTA2 (also known as α -smooth muscle actin or α -SMA) belongs to the actin family. Actins are highly conserved proteins that are involved in various types of cell motility and are ubiquitously expressed in all eukaryotic cells. ACTA2 is primarily expressed in vascular smooth muscle and anti-ACTA2 is commonly used to marker smooth muscle cells.

Lagerung

Lagerungsbedingungen:
Bei -20°C lagern. Vor Licht schützen.
Lagerungspuffer:
BS mit 50% Glycerin, 0,05% Proclin300, 0,5% BSA, pH 7,3.
Aliquotieren ist nicht notwendig bei -20°C Lagerung

*** 20ul-Größen enthalten 0.1% BSA

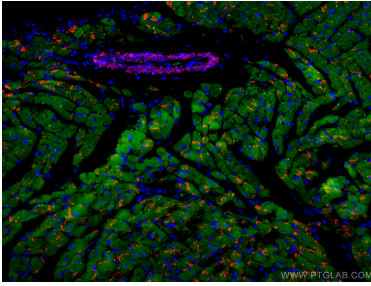
For technical support and original validation data for this product please contact:

T: 1 (888) 4PTGLAB (1-888-478-4522) (toll free
in USA), or 1(312) 455-8498 (outside USA)

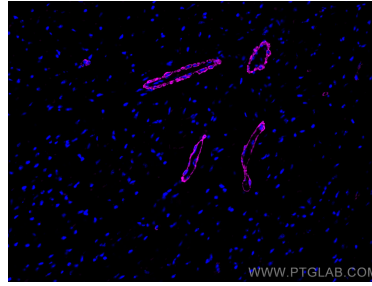
E: proteintech@ptglab.com
W: ptglab.com

This product is exclusively available under Proteintech Group brand and is not available to purchase from any other manufacturer.

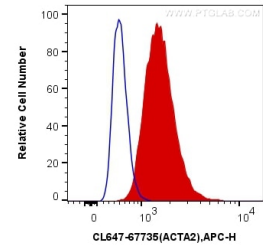
Ausgewählte Validierungsdaten



Immunofluorescent analysis of (4% PFA) fixed mouse heart tissue using CoraLite® Plus 647 smooth muscle actin specific antibody (CL647-67735, Clone: 1E9A11) at dilution of 1:100, CoraLite®488 Cardiac Troponin I antibody (CL488-66376, Clone: 1D5D6, green), CoraLite®594 N-cadherin antibody (CL594-22018, red). DAPI (blue).



Immunofluorescent analysis of (4% PFA) fixed mouse heart tissue using CoraLite® Plus 647 smooth muscle actin specific antibody (CL647-67735, Clone: 1E9A11) at dilution of 1:200.



1X10⁶ C2C12 cells were intracellularly stained with 0.4 ug CoraLite® Plus 647 Anti-Human smooth muscle actin specific (CL647-67735, Clone:1E9A11) (red), or 0.4 ug Control Antibody. Cells were fixed with 4% PFA and permeabilized with Flow Cytometry Perm Buffer (PF00011-C).