

Nur für Forschungszwecke

SERBP1 Monoklonaler Antikörper

Katalog-Nr.:CL647-67792



Allgemeine Informationen

Katalog-Nr.: CL647-67792	GenBank-Zugangsnummer: BC008045	Reinigungsmethode: Protein-G-Reinigung
Größe: 100ul , Konzentration: 1000 µg/ml von26135 Nanodrop;	GeneID (NCBI): von26135	CloneNo.: 1D4H1
Wirt: Maus	Vollständiger Name: SERPINE1 mRNA binding protein 1	Empfohlene Verdünnungen: IF 1:50-1:500
Isotyp: IgG1	Berechnete Masse: 45 kDa	Anregungs-/Emissionsmaxima- Wellenlängen: 654 nm / 674 nm
Immunogen Katalognummer: AG30202	Beobachtete Masse: 50 kDa	

Anwendungen

Geprüfte Anwendungen: IF	Positivkontrollen: IF : humanes Leberkarzinomgewebe,
Getestete Reaktivität: Human, Maus, Ratte	

Hintergrundinformationen

The plasminogen activator system (PA) plays an important role in invasion and metastasis of solid tumors. The PA Inhibitor type 1 (PAI-1) is the main physiologic regulator of plasminogen activation. PAI-RBP1 (PAI-1 mRNA Binding Protein 1, also named SERBP1), is an RNA-binding protein containing an RG-rich domain and an RGG box domain that might be methylated by protein arginine N-methyltransferases (PRMTs). SERBP1 was identified as an interacting partner of a Tudor domain containing protein TDRD3, and can localize to cytoplasmic stress granules (SGs).

Lagerung

Lagerungsbedingungen:
Bei -20°C lagern. Vor Licht schützen.
Lagerungspuffer:
BS mit 50% Glycerin, 0,05% Proclin300, 0,5% BSA, pH 7,3.
Aliquotieren ist nicht notwendig bei -20°C Lagerung

***** 20ul-Größen enthalten 0.1% BSA**

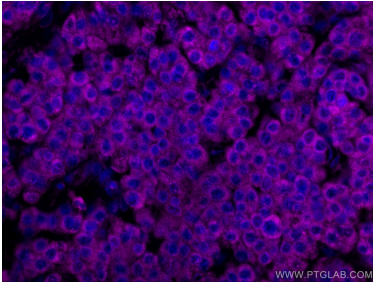
For technical support and original validation data for this product please contact:

T: 1 (888) 4PTGLAB (1-888-478-4522) (toll free
in USA), or 1(312) 455-8498 (outside USA)

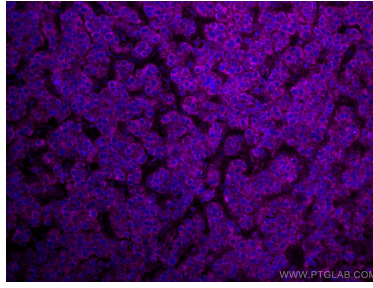
E: proteintech@ptglab.com
W: ptglab.com

This product is exclusively available under Proteintech Group brand and is not available to purchase from any other manufacturer.

Ausgewählte Validierungsdaten



Immunofluorescent analysis of (4% PFA) fixed human liver cancer tissue using CoraLite® Plus 647 SERBP1 antibody (CL647-67792, Clone: 1D4H1) at dilution of 1:200. DAPI (blue).



Immunofluorescent analysis of (4% PFA) fixed human liver cancer tissue using CoraLite® Plus 647 SERBP1 antibody (CL647-67792, Clone: 1D4H1) at dilution of 1:200.