

Nur für Forschungszwecke

# MFG-E8 Monoklonaler Antikörper

Katalog-Nr.: CL647-67797



## Allgemeine Informationen

<b>Katalog-Nr.:</b> CL647-67797	<b>GenBank-Zugangsnummer:</b> BC003610	<b>Reinigungsmethode:</b> Protein-A-Reinigung
<b>Größe:</b> 100ul, Konzentration: 1000 µg/ml von 4240 Nanodrop;	<b>GeneID (NCBI):</b> 4240	<b>CloneNo.:</b> 1A1A9
<b>Wirt:</b> Maus	<b>Vollständiger Name:</b> milk fat globule-EGF factor 8 protein	<b>Anregungs-/Emissionsmaxima-Wellenlängen:</b> 654 nm / 674 nm
<b>Isotyp:</b> IgG2b	<b>Berechnete Masse:</b> 43 kDa	
<b>Immunogen Katalognummer:</b> AG30666	<b>Beobachtete Masse:</b> 43 kDa	

## Anwendungen

**Geprüfte Anwendungen:**  
FC (Intra)

**Getestete Reaktivität:**  
Human

## Hintergrundinformationen

Milk fat globule-epidermal growth factor-factor 8 (MFG-E8), also known as lactadherin, is a multifunctional secreted glycoprotein exhibiting versatile functions in cell physiology affecting health and diseases. It plays roles in clearance of apoptotic cells, anti-inflammatory, wound healing, arterial remodeling, angiogenesis, enhancing tumorigenicity and cancer metastasis (PMID: 23972256). MFG-E8 consists of two-repeated EGF-like domains, a mucin-like domain and two-repeated discoidin-like domains (C-domains), and contains an integrin-binding motif (RGD sequence) in the EGF-like domain (PMID: 11856354). It shows ubiquitous pattern of expression in various types of cells and tissues. Altered expression of MFG-E8 causes disruptions of homeostasis and is correlated with a number of diseases (PMID: 27429513).

## Lagerung

**Lagerungsbedingungen:**  
Bei -20°C lagern. Vor Licht schützen. Nach dem Versand ein Jahr stabil.

**Lagerungspuffer:**  
BS mit 50% Glycerin, 0,05% Proclin300, 0,5% BSA, pH 7,3.

Aliquotieren ist nicht notwendig bei -20°C Lagerung

\*\*\* 20ul-Größen enthalten 0.1% BSA

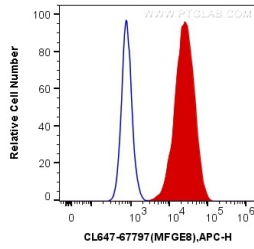
For technical support and original validation data for this product please contact:

T: 1 (888) 4PTGLAB (1-888-478-4522) (toll free in USA), or 1(312) 455-8498 (outside USA)

E: proteintech@ptglab.com  
W: ptglab.com

This product is exclusively available under Proteintech Group brand and is not available to purchase from any other manufacturer.

## Ausgewählte Validierungsdaten



1X10<sup>6</sup> MDA-MB-231 cells were intracellularly stained with 0.4 ug CoraLite® Plus 647 Anti-Human MFGE8 (CL647-67797, Clone:1A1A9) (red), or 0.4 ug Control Antibody. Cells were fixed with 4% PFA and permeabilized with Flow Cytometry Perm Buffer (PF00011-C).