

Nur für Forschungszwecke

Phospho-STAT5A (Tyr694) Rekombinanter Antikörper

Katalog-Nr.:CL647-80115



Allgemeine Informationen

Katalog-Nr.: CL647-80115	GenBank-Zugangsnummer: BC027036	Reinigungsmethode: Protein-A-Reinigung
Größe: 100ul , Konzentration: 1000 µg/ml von6776	GeneID (NCBI): von6776	CloneNo.: 2P21
Nanodrop;	Vollständiger Name: signal transducer and activator of transcription 5A	Anregungs-/Emissionsmaxima-Wellenlängen: 654 nm / 674 nm
Wirt: Kaninchen	Berechnete Masse: 794 aa, 92 kDa	
Isotyp: IgG	Beobachtete Masse: 90-95 kDa	

Anwendungen

Geprüfte Anwendungen:
FC (Intra)

Getestete Reaktivität:
Human

Hintergrundinformationen

STAT5A, also named as STAT5, belongs to the transcription factor STAT family. In response to cytokines and growth factors, STAT family members are phosphorylated by the receptor associated kinases, and then form homo- or heterodimers that translocate to the cell nucleus where they act as transcription activators. STAT5A is activated by, and mediates the responses of many cell ligands, such as IL2, IL3, IL7 GM-CSF, erythropoietin, thrombopoietin, and different GHs. Phosphorylation at Tyr694 is obligatory for Stat5 activation. Activation of STAT5A in myeloma and lymphoma associated with a TEL/JAK2 gene fusion is independent of cell stimulus and has been shown to be essential for the tumorigenesis. The mouse counterpart of human STAT5A is found to induce the expression of BCL2L1/BCL-X(L), which suggests the antiapoptotic function of STAT5A in cells.

Lagerung

Lagerungsbedingungen:
Bei -20°C lagern. Vor Licht schützen. Nach dem Versand ein Jahr stabil.

Lagerungspuffer:
BS mit 50% Glycerin, 0,05% Proclin300, 0,5% BSA, pH 7,3.

Aliquotieren ist nicht notwendig bei -20°C Lagerung

***** 20ul-Größen enthalten 0.1% BSA**

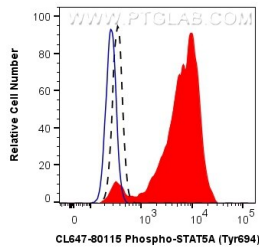
For technical support and original validation data for this product please contact:

T: 1 (888) 4PTGLAB (1-888-478-4522) (toll free in USA), or 1(312) 455-8498 (outside USA)

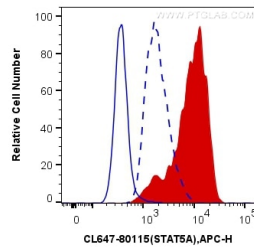
E: proteintech@ptglab.com
W: ptglab.com

This product is exclusively available under Proteintech Group brand and is not available to purchase from any other manufacturer.

Ausgewählte Validierungsdaten



1X10⁶ TF-1 cells untreated (dashed lines) or treated with GM-CSF (red) were intracellularly stained with 0.06 ug CoraLite® Plus 647 Anti-Human Phospho-STAT5A (Tyr694) (CL647-80115, Clone:2P21), or 0.06 ug Control Antibody (blue, solid line). Cells were fixed with 4% PFA and permeabilized with 90% MeOH.



1X10⁶ TF-1 cells untreated (dashed line, low) or treated with GM-CSF (100 ng/mL at 37°C for 30 minutes after serum- starvation overnight, red, positive) were intracellularly stained with 0.13 ug CoraLite® Plus 647 Anti-Human Phospho-STAT5A (Tyr694) (CL647-80115, Clone:2P21) (red), or 0.13 ug Control Antibody (blue, solid line). Cells were fixed with 4% PFA and permeabilized with 90% MeOH.