

Nur für Forschungszwecke

# CD14 Monoklonaler Antikörper

Katalog-Nr.:CL750-65056



## Allgemeine Informationen

<b>Katalog-Nr.:</b> CL750-65056	<b>GenBank-Zugangsnummer:</b> BC010507	<b>Reinigungsmethode:</b> Affinitätsreinigung
<b>Größe:</b> 100tests , 5 µl/test	<b>GeneID (NCBI):</b> 929	<b>CloneNo.:</b> UCHM-1
<b>Wirt:</b> Maus	<b>Vollständiger Name:</b> CD14 molecule	<b>Anregungs-/Emissionsmaxima-Wellenlängen:</b> 755 nm / 780 nm
<b>Isotyp:</b> IgG2a	<b>Berechnete Masse:</b> 375 aa, 40 kDa	

## Anwendungen

**Geprüfte Anwendungen:**  
FC

**Getestete Reaktivität:**  
Human

## Hintergrundinformationen

CD14 is a 50-55 kDa glycosylphosphatidylinositol-anchored glycoprotein preferentially expressed on monocytes and macrophages, and at lower levels on granulocytes (PMID: 3385210; 2462937; 7685797). CD14 can also exist as a soluble protein. CD14 acts as a co-receptor for bacterial liposaccharides (LPS) (PMID: 1698311). It plays a major role in the inflammatory response of monocytes to LPS.

## Lagerung

**Lagerungsbedingungen:**  
Store at 2-8°C. Avoid exposure to light. Stable for one year after shipment.

**Lagerungspuffer:**  
PBS with 0.09% sodium azide and 0.5% BSA.

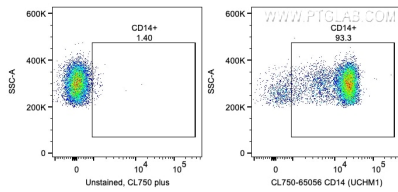
For technical support and original validation data for this product please contact:

T: 1 (888) 4PTGLAB (1-888-478-4522) (toll free in USA), or 1(312) 455-8498 (outside USA)

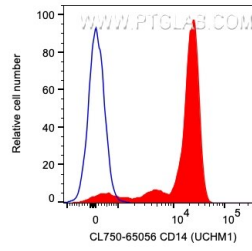
E: [proteintech@ptglab.com](mailto:proteintech@ptglab.com)  
W: [ptglab.com](http://ptglab.com)

**This product is exclusively available under Proteintech Group brand and is not available to purchase from any other manufacturer.**

## Ausgewählte Validierungsdaten



1X10<sup>6</sup> human PBMCs were surface stained with 5 ul CoraLite® Plus 750 Anti-Human CD14 (CL750-65056, Clone:UCHM-1) or unstained. Cells were not fixed. Monocytes were gated.



1X10<sup>6</sup> human PBMCs were surface stained with 5 ul CoraLite® Plus 750 Anti-Human CD14 (CL750-65056, Clone:UCHM-1) or unstained. Cells were not fixed. Monocytes were gated.