

Nur für Forschungszwecke

CD16 Monoklonaler Antikörper

Katalog-Nr.:CL750-65090



Allgemeine Informationen

Katalog-Nr.: CL750-65090	GenBank-Zugangsnummer: BC017865	Reinigungsmethode: Affinitätsreinigung
Größe: 100tests , 5 µl/test	GeneID (NCBI): 2214	CloneNo.: 3G8
Wirt: Maus	Vollständiger Name: Fc fragment of IgG, low affinity IIIa, receptor (CD16a)	Anregungs-/Emissionsmaxima-Wellenlängen: 755 nm / 780 nm
Isotyp: Mouse IgG1, k	Berechnete Masse: 254 aa, 29 kDa	

Anwendungen

Geprüfte Anwendungen:
FC

Getestete Reaktivität:
Human

Hintergrundinformationen

CD16 is a 50-70-kDa low affinity Fc receptor found on the surface of natural killer cells, neutrophil polymorphonuclear leukocytes, monocytes and macrophages. CD16 mediates antibody-dependent cellular cytotoxicity (ADCC) and other antibody-dependent responses, such as phagocytosis. CD16 has been identified as Fc receptors Fcγ RIIIa (CD16a) and Fcγ RIIIb (CD16b), encoded by two nearly identical genes, FCGR3A and the FCGR3B. Clone 3G8 recognizes both the CD16a and CD16b (PMID: 7592758).

Lagerung

Lagerungsbedingungen:

Store at 2-8°C. Avoid exposure to light. Stable for one year after shipment.

Lagerungspuffer:

PBS with 0.09% sodium azide and 0.5% BSA.

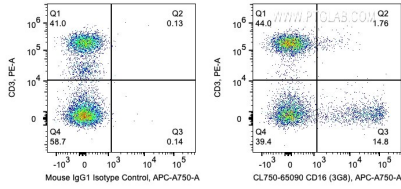
For technical support and original validation data for this product please contact:

T: 1 (888) 4PTGLAB (1-888-478-4522) (toll free in USA), or 1(312) 455-8498 (outside USA)

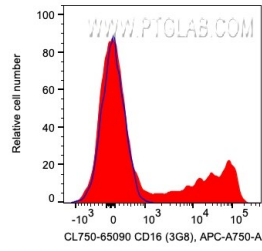
E: proteintech@ptglab.com
W: ptglab.com

This product is exclusively available under Proteintech Group brand and is not available to purchase from any other manufacturer.

Ausgewählte Validierungsdaten



1X10⁶ human PBMCs were surface co-stained with PE Anti-Human CD3 and 5 ul CoraLite® Plus 750 Anti-Human CD16 (CL750-65090, Clone:3G8) or Mouse IgG1 Isotype Control. Cells were not fixed. Lymphocytes were gated.



1X10⁶ human PBMCs were surface co-stained with PE Anti-Human CD3 and 5 ul CoraLite® Plus 750 Anti-Human CD16 (CL750-65090, Clone:3G8) or Mouse IgG1 Isotype Control. Cells were not fixed. CD3- lymphocytes were gated.