

Nur für Forschungszwecke

IgG2b Isotype Control Monoklonaler Antikörper



Katalog-Nr.:CL750-65128

Allgemeine Informationen

Katalog-Nr.: CL750-65128	GenBank-Zugangsnummer: GeneID (NCBI): 16016	Reinigungsmethode: Affinitätsreinigung
Größe: 100ug , 200 µg/mL	Vollständiger Name: immunoglobulin heavy chain 3 (serum IgG2b)	CloneNo.: MPC-11
Wirt: Maus		Anregungs-/Emissionsmaxima-Wellenlängen: 755 nm / 780 nm
Isotyp: IgG2b		

Anwendungen

Geprüfte Anwendungen:
FC
Getestete Reaktivität:
Human

Hintergrundinformationen

The MPC-11 immunoglobulin is useful as an isotype-matched control. The MPC-11 immunoglobulin has an unknown binding specificity and is used as an isotype control for mouse IgG2b antibodies. This antibody has been quality-tested for flow cytometry as negative control.

Lagerung

Lagerungsbedingungen:
Store at 2-8°C. Avoid exposure to light. Stable for one year after shipment.
Lagerungspuffer:
PBS with 0.09% sodium azide and 0.5% BSA.

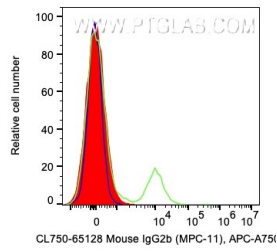
For technical support and original validation data for this product please contact:

T: 1 (888) 4PTGLAB (1-888-478-4522) (toll free in USA), or 1(312) 455-8498 (outside USA)

E: proteintech@ptglab.com
W: ptglab.com

This product is exclusively available under Proteintech Group brand and is not available to purchase from any other manufacturer.

Ausgewählte Validierungsdaten



1X10⁶ human PBMCs were surface stained with 0.2 ug Coralite® Plus 750 Mouse IgG2b Isotype Control (CL750-65128, Clone:MPC-11) (red), Anti-Human CD20 (green), or unstained (blue). Cells were not fixed. Lymphocytes were gated.