

Nur für Forschungszwecke

# CD21 Monoklonaler Antikörper

Katalog-Nr.:CL750-65198



## Allgemeine Informationen

<b>Katalog-Nr.:</b> CL750-65198	<b>GenBank-Zugangsnummer:</b> BC136394	<b>Reinigungsmethode:</b> Protein-G-Reinigung
<b>Größe:</b> 100tests , 5 µl/test	<b>GeneID (NCBI):</b> 1380	<b>CloneNo.:</b> BU32
<b>Wirt:</b> Maus	<b>Vollständiger Name:</b> complement component (3d/Epstein Barr virus) receptor 2	<b>Anregungs-/Emissionsmaxima- Wellenlängen:</b> 755 nm / 780 nm
<b>Isotyp:</b> IgG1, kappa	<b>Berechnete Masse:</b> 1092 aa, 119 kDa	

## Anwendungen

**Geprüfte Anwendungen:**  
FC

**Getestete Reaktivität:**  
Human

## Hintergrundinformationen

CD21, also known as complement receptor type 2 (CR2), complement C3d receptor, and Epstein-Barr virus receptor, is a transmembrane protein that contains a small cytoplasmic domain, a transmembrane region and an extracellular domain consisting of 15 tandem short consensus repeat sequences (PMID: 6230668; 2551147). It is expressed on B cells, follicular dendritic cells, thymocytes and a subset of peripheral T cells (PMID: 26119182). CD21 binds complement fragments C3d, C3dg and iC3b and acts as a receptor for the Epstein-Barr virus (PMID: 7753047). On B cells, together with CD19 and CD81, CD21 forms a complex that functions as a co-receptor to the BCR (PMID: 7542009). It is involved in B cells activation and functions.

## Lagerung

**Lagerungsbedingungen:**  
Store at 2-8°C. Avoid exposure to light. Stable for one year after shipment.  
**Lagerungspuffer:**  
PBS with 0.09% sodium azide and 0.5% BSA.

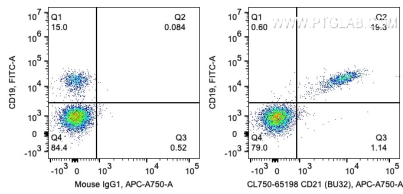
For technical support and original validation data for this product please contact:

T: 1 (888) 4PTGLAB (1-888-478-4522) (toll free  
in USA), or 1(312) 455-8498 (outside USA)

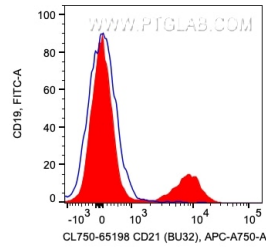
E: [proteintech@ptglab.com](mailto:proteintech@ptglab.com)  
W: [ptglab.com](http://ptglab.com)

**This product is exclusively available under Proteintech Group brand and is not available to purchase from any other manufacturer.**

## Ausgewählte Validierungsdaten



1X10<sup>6</sup> human PBMCs were surface co-stained with FITC Anti-Human CD19 and 5 ul CoraLite® Plus 750 Anti-Human CD21 (CL750-65198, Clone:BU32) or Mouse IgG1 Isotype Control (66360-1-Ig, Clone: T1F8D3F10). Cells were not fixed. Lymphocytes were gated.



1X10<sup>6</sup> human PBMCs were surface stained with 5 ul CoraLite® Plus 750 Anti-Human CD21 (CL750-65198, Clone: BU32) or Mouse IgG1 Isotype Control (66360-1-Ig, Clone: T1F8D3F10). Cells were not fixed. Lymphocytes were gated.