

Nur für Forschungszwecke

# CD45RA Monoklonaler Antikörper

Katalog-Nr.:CL750-65226



## Allgemeine Informationen

<b>Katalog-Nr.:</b> CL750-65226	<b>GenBank-Zugangsnummer:</b> BC014239	<b>Reinigungsmethode:</b> Affinitätsreinigung
<b>Größe:</b> 100tests , 5 µl/test	<b>GeneID (NCBI):</b> 5788	<b>CloneNo.:</b> F8-11-13
<b>Wirt:</b> Maus	<b>Vollständiger Name:</b> protein tyrosine phosphatase, receptor type, C	<b>Anregungs-/Emissionsmaxima- Wellenlängen:</b> 755 nm / 780 nm
<b>Isotyp:</b> IgG1, kappa	<b>Berechnete Masse:</b> 1304 aa, 147 kDa	

## Anwendungen

**Geprüfte Anwendungen:**  
FC

**Getestete Reaktivität:**  
Human

## Hintergrundinformationen

CD45, also known as protein tyrosine phosphatase, receptor type C, is a type I transmembrane protein expressed on the surface of all haematopoietic cells with the exception of erythrocytes and platelets (PMID: 3489673; 28615666). CD45 is a pan-haematopoietic cell marker and has been shown to be essential for T- and B-cell activation and signalling (PMID: 9429890; 16378097). CD45 exists as multiple isoforms due to alternative splicing of three exons (4, 5, and 6, designated A, B, and C) in the extracellular domain (PMID: 12414720). CD45RA is expressed on naïve T cells, B cells, and monocytes (PMID: 1830500; 14687231).

## Lagerung

**Lagerungsbedingungen:**  
Store at 2-8°C. Avoid exposure to light. Stable for one year after shipment.  
**Lagerungspuffer:**  
PBS with 0.09% sodium azide and 0.5% BSA.

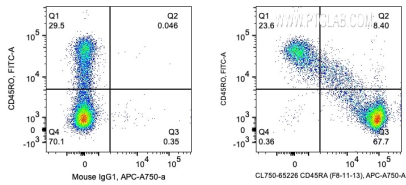
For technical support and original validation data for this product please contact:

T: 1 (888) 4PTGLAB (1-888-478-4522) (toll free  
in USA), or 1(312) 455-8498 (outside USA)

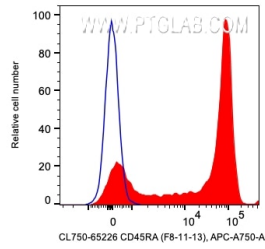
E: [proteintech@ptglab.com](mailto:proteintech@ptglab.com)  
W: [ptglab.com](http://ptglab.com)

This product is exclusively available under Proteintech Group brand and is not available to purchase from any other manufacturer.

## Ausgewählte Validierungsdaten



1X10<sup>6</sup> human PBMCs were surface co-stained with FITC Anti-Human CD45RO and 5 ul CoraLite® Plus 750 Anti-Human CD45RA (CL750-65226, Clone:F8-11-13) or Mouse IgG1 Isotype Control. Cells were not fixed. Lymphocytes were gated.



1X10<sup>6</sup> human PBMCs were surface stained with 5 ul CoraLite® Plus 750 Anti-Human CD45RA (CL750-65226, Clone:F8-11-13) or Mouse IgG1 Isotype Control. Cells were not fixed. Lymphocytes were gated.