

Nur für Forschungszwecke

LRP1 Monoklonaler Antikörper

Katalog-Nr.:CL750-65233



Allgemeine Informationen

Katalog-Nr.: CL750-65233	GenBank-Zugangsnummer: BC045107	Reinigungsmethode: N/A
Größe: 100tests , 5 µl/test	GeneID (NCBI): 4035	CloneNo.: 5A6
Wirt: Maus	Vollständiger Name: low density lipoprotein-related protein 1 (alpha-2-macroglobulin receptor)	Anregungs-/Emissionsmaxima-Wellenlängen: 755 nm / 780 nm
Isotyp: IgG2b	Berechnete Masse: 505 kDa	

Anwendungen

Geprüfte Anwendungen:
FC

Getestete Reaktivität:
Human

Hintergrundinformationen

Lagerung

Lagerungsbedingungen:
Store at 2-8°C. Avoid exposure to light. Stable for one year after shipment.

Lagerungspuffer:
PBS with 0.09% sodium azide and 0.5% BSA.

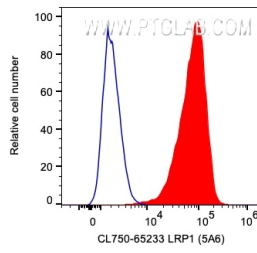
For technical support and original validation data for this product please contact:

T: 1 (888) 4PTGLAB (1-888-478-4522) (toll free in USA), or 1(312) 455-8498 (outside USA)

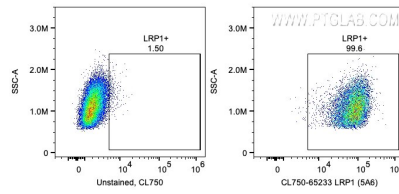
E: proteintech@ptglab.com
W: ptglab.com

This product is exclusively available under Proteintech Group brand and is not available to purchase from any other manufacturer.

Ausgewählte Validierungsdaten



1X10⁶ U-87 MG cells were surface stained with 5 ul CoraLite® Plus 750 Anti-Human LRP1 (CL750-65233, Clone:5A6) or unstained. Cells were not fixed.



1X10⁶ U-87 MG cells were surface stained with 5 ul CoraLite® Plus 750 Anti-Human LRP1 (CL750-65233, Clone:5A6) or unstained. Cells were not fixed.