

Nur für Forschungszwecke

IgM Isotype Control Monoklonaler Antikörper



Katalog-Nr.:CL750-65243

Allgemeine Informationen

Katalog-Nr.:
CL750-65243
Größe:
100ug , 200 µg/ml
Wirt:
Maus
Isotyp:
IgM, λ

GenBank-Zugangsnummer:
GeneID (NCBI):
Vollständiger Name:

Reinigungsmethode:
N/A
CloneNo.:
MOPC-104E
Anregungs-/Emissionsmaxima-
Wellenlängen:
755 nm / 780 nm

Anwendungen

Geprüfte Anwendungen:
FC
Getestete Reaktivität:

Hintergrundinformationen

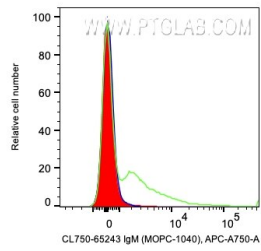
Lagerung

Lagerungsbedingungen:
Store at 2-8°C. Avoid exposure to light. Stable for one year after shipment.
Lagerungspuffer:
PBS with 0.09% sodium azide and 0.5% BSA.

For technical support and original validation data for this product please contact:
T: 1 (888) 4PTGLAB (1-888-478-4522) (toll free in USA), or 1(312) 455-8498 (outside USA) E: proteintech@ptglab.com
W: ptglab.com

This product is exclusively available under Proteintech Group brand and is not available to purchase from any other manufacturer.

Ausgewählte Validierungsdaten



1×10^6 human whole blood cells were surface stained with 0.2 μg CoraLite® Plus 750 Anti-Mouse IgM Isotype Control (red), 5 μl CoraLite 750 Plus Anti-Human STRO-1 (green), or unstained (blue). Cells were not fixed.