

Nur für Forschungszwecke

# CD31 Monoklonaler Antikörper

Katalog-Nr.:CL750-65268



## Allgemeine Informationen

<b>Katalog-Nr.:</b> CL750-65268	<b>GenBank-Zugangsnummer:</b> BC022512	<b>Reinigungsmethode:</b> Affinitätsreinigung
<b>Größe:</b> 100tests , 5 µl/test	<b>GeneID (NCBI):</b> 5175	<b>CloneNo.:</b> WM-59
<b>Wirt:</b> Maus	<b>Vollständiger Name:</b> platelet/endothelial cell adhesion molecule	<b>Anregungs-/Emissionsmaxima-Wellenlängen:</b> 755 nm / 780 nm
<b>Isotyp:</b> IgG1, kappa	<b>Berechnete Masse:</b> 83 kDa	

## Anwendungen

**Geprüfte Anwendungen:**  
FC

**Getestete Reaktivität:**  
Human

## Hintergrundinformationen

CD31, also known as PECAM1 (Platelet endothelial cell adhesion molecule), is a member of the immunoglobulin gene superfamily of cell adhesion molecules. CD31 is a transmembrane glycoprotein that is highly expressed on the surface of the endothelium, making up a large portion of its intracellular junctions. It is also present on the surface of hematopoietic cells and immune cells including platelets, monocytes, neutrophils, natural killer cells, megakaryocytes and some types of T-cell (PMID: 9011572). As well as its role in cell-cell adhesion, CD31 functions as a signaling receptor, and is involved in important physiological events such as nitric oxide production, regulation of T-cell immunity and tolerance, leukocyte transendothelial migration and inflammation and angiogenesis (PMID: 21183735; 20978210; 17872453; 20634489).

## Lagerung

**Lagerungsbedingungen:**

Store at 2-8°C. Avoid exposure to light. Stable for one year after shipment.

**Lagerungspuffer:**

PBS with 0.09% sodium azide and 0.5% BSA.

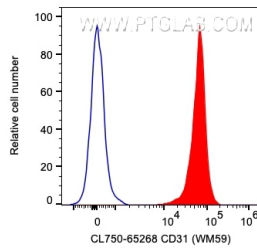
For technical support and original validation data for this product please contact:

T: 1 (888) 4PTGLAB (1-888-478-4522) (toll free in USA), or 1(312) 455-8498 (outside USA)

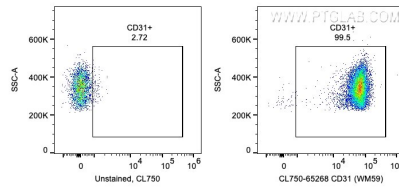
E: [proteintech@ptglab.com](mailto:proteintech@ptglab.com)  
W: [ptglab.com](http://ptglab.com)

**This product is exclusively available under Proteintech Group brand and is not available to purchase from any other manufacturer.**

## Ausgewählte Validierungsdaten



1X10<sup>6</sup> human PBMCs were surface stained with 5 ul CoraLite® Plus 750 Anti-Human CD31 (CL750-65268, Clone:WM-59) (red) or unstained. Cells were not fixed. Monocytes were gated.



1X10<sup>6</sup> human PBMCs were surface stained with 5 ul CoraLite® Plus 750 Anti-Human CD31 (CL750-65268, Clone:WM-59) or unstained. Cells were not fixed. Monocytes were gated.