

Nur für Forschungszwecke

# Mouse IgG2a isotype control Monoklonaler Antikörper



Katalog-Nr.:CL750-66360-2

## Allgemeine Informationen

<b>Katalog-Nr.:</b> CL750-66360-2	<b>GenBank-Zugangsnummer:</b> GeneID (NCBI):	<b>Reinigungsmethode:</b> Protein-A-Reinigung
<b>Größe:</b> 100ug , Konzentration: 200 µg/ml von Nanodrop;	<b>Vollständiger Name:</b>	<b>CloneNo.:</b> 11A1B2
<b>Wirt:</b> Maus		<b>Anregungs-/Emissionsmaxima- Wellenlängen:</b> 755 nm / 780 nm
<b>Isotyp:</b> IgG2a		

## Anwendungen

**Geprüfte Anwendungen:**  
FC

**Getestete Reaktivität:**  
Megathura Crenulata

## Hintergrundinformationen

This antibody is used as the isotype control of mouse IgG2a. It can be used as the isotype control in Flow Cytometry, Immuno-Precipitation and other experiments. The immunogen of this antibody is Keyhole Limpet Hemocyanin (KLH).

## Lagerung

**Lagerungsbedingungen:**  
Store at 2-8°C. Avoid exposure to light. Stable for one year after shipment.

**Lagerungspuffer:**  
PBS with 0.09% sodium azide and 0.5% BSA.

**\*\*\* 20ul-Größen enthalten 0.1% BSA**

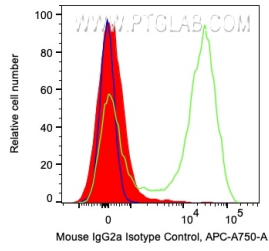
For technical support and original validation data for this product please contact:

T: 1 (888) 4PTGLAB (1-888-478-4522) (toll free  
in USA), or 1(312) 455-8498 (outside USA)

E: [proteintech@ptglab.com](mailto:proteintech@ptglab.com)  
W: [ptglab.com](http://ptglab.com)

**This product is exclusively available under Proteintech Group brand and is not available to purchase from any other manufacturer.**

## Ausgewählte Validierungsdaten



$1 \times 10^6$  human PBMCs were surface stained with 0.2  $\mu$ g CoraLite® Plus 750 Anti-Mouse IgG2a isotype control (CL750-66360-2, Clone:11A1B2) (red), CL750 Anti-Human CD5 (green), or unstained (blue). Cells were not fixed. Lymphocytes were gated.