

Nur für Forschungszwecke

CD11b Monoklonaler Antikörper

Katalog-Nr.: CR-65116



Allgemeine Informationen

Katalog-Nr.: CR-65116	GenBank-Zugangsnummer: BC096346	Reinigungsmethode: Affinitätsreinigung
Größe: 100tests, 5 µl/test	GeneID (NCBI): 3684	CloneNo.: ICRF44
Wirt: Maus	Vollständiger Name: integrin, alpha M (complement component 3 receptor 3 subunit)	Anregungs-/Emissionsmaxima-Wellenlängen: 592 nm / 611 nm
Isotyp: IgG1, kappa	Berechnete Masse: 1152 aa, 127 kDa	

Anwendungen

Geprüfte Anwendungen:
FC

Getestete Reaktivität:
Human

Hintergrundinformationen

Integrins are cell adhesion receptors that are heterodimers composed of non-covalently associated α and β subunits (PMID: 9779984). CD11b, also known as Integrin alpha M or CR3A, belongs to the integrin alpha chain family. CD11b forms an α/β heterodimer with CD18 (integrin β 2). CD11b/CD18 is implicated in various adhesive interactions of monocytes, macrophages and granulocytes as well as in mediating the uptake of complement-coated particles and pathogens (PMID: 9558116; 20008295). CD11b/CD18 is a receptor for the complement protein fragment iC3b, and is also a receptor for fibrinogen, factor X and ICAM1 (PMID: 2971974; 15485828).

Lagerung

Lagerungsbedingungen:
Store at 2-8°C. Avoid exposure to light. Stable for one year after shipment.
Lagerungspuffer:
PBS with 0.09% sodium azide and 0.5% BSA.

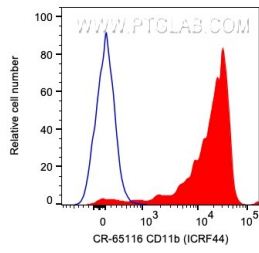
For technical support and original validation data for this product please contact:

T: 1 (888) 4PTGLAB (1-888-478-4522) (toll free in USA), or 1(312) 455-8498 (outside USA)

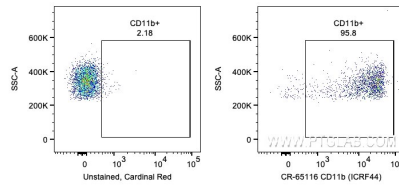
E: proteintech@ptglab.com
W: ptglab.com

This product is exclusively available under Proteintech Group brand and is not available to purchase from any other manufacturer.

Ausgewählte Validierungsdaten



1X10⁶ human PBMCs were surface stained with 5 ul Cardinal Red™ Anti-Human CD11b (CR-65116, Clone:ICRF44) (red) or unstained. Cells were not fixed. Monocytes were gated.



1X10⁶ human PBMCs were surface stained with 5 ul Cardinal Red™ Anti-Human CD11b (CR-65116, Clone:ICRF44) or unstained. Cells were not fixed. Monocytes were gated.