

Nur für Forschungszwecke

# CD3 Monoklonaler Antikörper

Katalog-Nr.: CR-65133



## Allgemeine Informationen

<b>Katalog-Nr.:</b> CR-65133	<b>GenBank-Zugangsnummer:</b> BC049847	<b>Reinigungsmethode:</b> Affinitätsreinigung
<b>Größe:</b> 100tests, 5 ul/test	<b>GeneID (NCBI):</b> 916	<b>CloneNo.:</b> OKT3
<b>Wirt:</b> Maus	<b>Vollständiger Name:</b> CD3e molecule, epsilon (CD3-TCR complex)	<b>Anregungs-/Emissionsmaxima-Wellenlängen:</b> 592 nm / 611 nm
<b>Isotyp:</b> IgG2a, kappa	<b>Berechnete Masse:</b> 207 aa, 23 kDa	

## Anwendungen

**Geprüfte Anwendungen:**  
FC

**Getestete Reaktivität:**  
Human

## Hintergrundinformationen

CD3 is a multimeric protein associated with the T-cell receptor (TCR) to form a complex involved in antigen recognition and signal transduction (PMID: 15885124). CD3 is composed of CD3 $\gamma$ ,  $\delta$ ,  $\epsilon$ , and  $\zeta$  chains (PMID: 1826255). It is expressed by thymocytes in a developmentally regulated manner, T cells, and some NK cells (PMID: 3289580). The TCR recognizes antigens bound to major histocompatibility complex (MHC) molecules. TCR-mediated peptide-MHC recognition is transmitted to the CD3 complex, leading to the intracellular signal transduction (PMID: 11985657).

## Lagerung

**Lagerungsbedingungen:**  
Store at 2-8°C. Avoid exposure to light. Stable for one year after shipment.  
**Lagerungspuffer:**  
PBS with 0.09% sodium azide and 0.5% BSA.

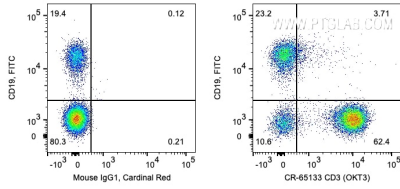
For technical support and original validation data for this product please contact:

T: 1 (888) 4PTGLAB (1-888-478-4522) (toll free in USA), or 1(312) 455-8498 (outside USA)

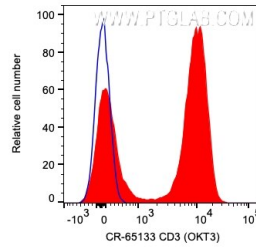
E: [proteintech@ptglab.com](mailto:proteintech@ptglab.com)  
W: [ptglab.com](http://ptglab.com)

This product is exclusively available under Proteintech Group brand and is not available to purchase from any other manufacturer.

## Ausgewählte Validierungsdaten



1X10<sup>6</sup> human PBMCs were surface co-stained with FITC Anti-Human CD19 and 5 ul Cardinal Red™ Anti-Human CD3 (CR-65133, Clone:OKT3) or Mouse IgG2a Isotype Control. Cells were not fixed. Lymphocytes were gated.



1X10<sup>6</sup> human PBMCs were surface stained with 5 ul Cardinal Red™ Anti-Human CD3 (CR-65133, Clone:OKT3) (red) or Mouse IgG2a Isotype Control. Cells were not fixed. Lymphocytes were gated.