

Nur für Forschungszwecke

# CD42b Monoklonaler Antikörper

Katalog-Nr.: CR-65163



## Allgemeine Informationen

Katalog-Nr.:  
CR-65163

Größe:  
100tests, 5 µl/test

Wirt:  
Maus

Isotyp:  
IgG1

GenBank-Zugangsnummer:  
BC027955

GeneID (NCBI):  
2811

Vollständiger Name:  
glycoprotein Ib (platelet), alpha polypeptide

Berechnete Masse:  
626 aa, 69 kDa

Reinigungsmethode:

Mit Protein-A-  
Affinitätschromatographie gereinigt

CloneNo.:  
AK2

Anregungs-/Emissionsmaxima-  
Wellenlängen:  
592 nm / 611 nm

## Anwendungen

Geprüfte Anwendungen:  
FC

Getestete Reaktivität:  
Human

## Hintergrundinformationen

CD42b, also known as platelet glycoprotein Ib alpha chain (GPIb alpha), is a type I transmembrane glycoprotein of 135-145 kDa (PMID: 2656709). It is expressed on platelets and megakaryocytes. CD42b and CD42c (GPIb beta) are linked by a disulphide bond to form GPIb (PMID: 7660135). GPIb forms a noncovalent complex with CD42a (GPIX) and CD42d (GPV) and acts as a receptor for von Willebrand factor (vWF) and thrombin (PMID: 7660135; 3759960). The GPIb-V-IX complex mediates vWF-dependent platelet adhesion to blood vessels. Defects in the expression of CD42b result in Bernard-Soulier syndromes and platelet-type von Willebrand disease (PMID: 9371310).

## Lagerung

Lagerungsbedingungen:

Store at 2-8°C. Avoid exposure to light. Stable for one year after shipment.

Lagerungspuffer:

PBS with 0.09% sodium azide and 0.5% BSA.

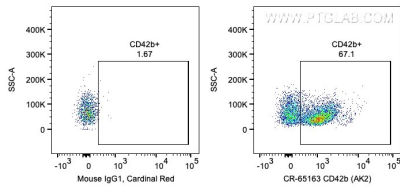
For technical support and original validation data for this product please contact:

T: 1 (888) 4PTGLAB (1-888-478-4522) (toll free  
in USA), or 1(312) 455-8498 (outside USA)

E: [proteintech@ptglab.com](mailto:proteintech@ptglab.com)  
W: [ptglab.com](http://ptglab.com)

This product is exclusively available under Proteintech Group brand and is not available to purchase from any other manufacturer.

## Ausgewählte Validierungsdaten



1X10<sup>6</sup> human peripheral blood platelets were surface stained with 5 ul Cardinal Red™ Anti-Human CD42b (CR-65163, Clone: AK2) or Mouse IgG1 Isotype Control. Cells were not fixed.