

Nur für Forschungszwecke

# CD163 Monoklonaler Antikörper

Katalog-Nr.: CR-65169



## Allgemeine Informationen

**Katalog-Nr.:**  
CR-65169

**Größe:**  
100tests, 5 ul/test

**Wirt:**  
Maus

**Isotyp:**  
IgG1, kappa

**GenBank-Zugangsnummer:**  
BC051281

**GeneID (NCBI):**  
9332

**Vollständiger Name:**  
CD163 molecule

**Berechnete Masse:**  
1156 aa, 125 kDa

**Reinigungsmethode:**

Mit Protein-A-  
Affinitätschromatographie gereinigt

**CloneNo.:**  
GHI/61

**Anregungs-/Emissionsmaxima-  
Wellenlängen:**  
592 nm / 611 nm

## Anwendungen

**Geprüfte Anwendungen:**

FC

**Getestete Reaktivität:**

Human

## Hintergrundinformationen

CD163, also known as M130, is a membrane glycoprotein which belongs to the scavenger receptor superfamily (PMID: 8370408). It is an acute phase-regulated and signal-inducing macrophage protein expressed exclusively in monocytes and tissue macrophages (PMID: 11196644). CD163 mediates endocytosis of haptoglobin-haemoglobin complexes (PMID: 11196644). The uptake of haptoglobin by macrophages contributes to the recycling of iron and also to the inflammatory response (PMID: 22900885). Soluble CD163 (sCD163), as a result of ectodomain shedding during inflammatory activation of macrophages, circulates in blood and has been suggested as a plasma/serum marker for macrophage activity (PMID: 12570164).

## Lagerung

**Lagerungsbedingungen:**

Store at 2-8°C. Avoid exposure to light. Stable for one year after shipment.

**Lagerungspuffer:**

PBS with 0.09% sodium azide and 0.5% BSA.

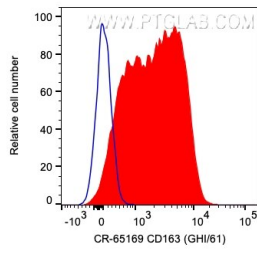
For technical support and original validation data for this product please contact:

T: 1 (888) 4PTGLAB (1-888-478-4522) (toll free  
in USA), or 1(312) 455-8498 (outside USA)

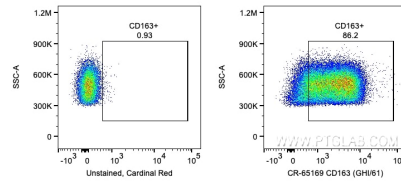
E: [proteintech@ptglab.com](mailto:proteintech@ptglab.com)  
W: [ptglab.com](http://ptglab.com)

This product is exclusively available under Proteintech Group brand and is not available to purchase from any other manufacturer.

## Ausgewählte Validierungsdaten



1X10<sup>6</sup> human PBMCs were surface stained with 5 ul Cardinal Red™ Anti-Human CD163 (CR-65169, Clone:GHI/61) (red) or unstained. Cells were not fixed. Monocytes and granulocytes were gated.



1X10<sup>6</sup> human PBMCs were surface stained with 5 ul Cardinal Red™ Anti-Human CD163 (CR-65169, Clone:GHI/61) or unstained. Cells were not fixed. Monocytes and granulocytes were gated.