

Allgemeine Informationen

Katalog-Nr.:

CR-65186

Größe:

100tests , 5 µl/test

Wirt:

Maus

Isotyp:

IgG1, kappa

GenBank-Zugangsnummer:

BC058928

GeneID (NCBI):

290

Vollständiger Name:

alanyl (membrane) aminopeptidase

Berechnete Masse:

110 kDa

Reinigungsmethode:

Mit Protein-A-

Affinitätschromatographie gereinigt

CloneNo.:

WM15

Anregungs-/Emissionsmaxima-

Wellenlängen:

592 nm / 611 nm

Anwendungen

Geprüfte Anwendungen:

FC

Getestete Reaktivität:

Human, Nicht-Humane Primaten

Hintergrundinformationen

CD13, also named as APN, ANPEP (aminopeptidase N) or PEPN, belongs to the peptidase M1 family. CD13 is a heavily glycosylated, ~150-240 kDa, type-II membrane, expressed by most cells of myeloid origin including monocytes, macrophages, granulocytes, and their hematopoietic precursors. It is also abundantly expressed in the brush border of epithelial cells from renal proximal tubules and small intestine, in prostatic epithelial cells, in bile duct canaliculi, in mast cells, and, in some cases, in fibroblasts and smooth muscle cells. CD13 is a multifunctional protein and plays varying roles in cell migration, cell proliferation, cell differentiation, and so on. CD13 participates in angiogenesis generating and modulating angiogenic signals and can be a marker of angiogenic vessels. CD13 is also a pan-myeloid marker, present on mature granulocytes and monocytes. (PMID: 8805662, 10098327, 18603472, 18097955, 17897790, 17888402, 21339174)

Lagerung

Lagerungsbedingungen:

Store at 2-8°C. Avoid exposure to light. Stable for one year after shipment.

Lagerungspuffer:

PBS with 0.09% sodium azide and 0.5% BSA.

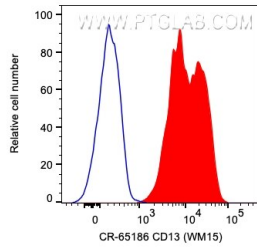
For technical support and original validation data for this product please contact:

T: 1 (888) 4PTGLAB (1-888-478-4522) (toll free
in USA), or 1(312) 455-8498 (outside USA)

E: proteintech@ptglab.com
W: ptglab.com

This product is exclusively available under Proteintech Group brand and is not available to purchase from any other manufacturer.

Ausgewählte Validierungsdaten



1X10⁶ human PBMCs were surface stained with 5 ul Cardinal Red™ Anti-Human CD13 (CR-65186, Clone:WM15) (red) or unstained. Cells were not fixed. Granulocytes were gated.