

# CD18 Monoklonaler Antikörper

Katalog-Nr.: CR-65190

## Allgemeine Informationen

Katalog-Nr.:

CR-65190

Größe:

100 tests, 5 µl/test

Wirt:

Maus

Isotyp:

IgG1, kappa

GenBank-Zugangsnummer:

BC005861

GeneID (NCBI):

3689

Vollständiger Name:

integrin, beta 2 (complement

component 3 receptor 3 and 4 subunit)

Berechnete Masse:

85 kDa

Reinigungsmethode:

Protein-A-Reinigung

CloneNo.:

TS1/18

Anregungs-/Emissionsmaxima-

Wellenlängen:

592 nm / 611 nm

## Anwendungen

Geprüfte Anwendungen:

FC

Getestete Reaktivität:

Human

## Hintergrundinformationen

CD18, also known as integrin beta-2, is a transmembrane protein that forms heterodimers with CD11a, CD11b, CD11c, CD11d (PMID: 1968349). CD11a/CD18 (LFA-1) is expressed by all leukocytes, while CD11b/CD18 (Mac-1) and CD11c/CD18 (p150,95) are normally restricted to expression on monocytes, macrophages, polymorphonuclear lymphocytes (PMNs), and natural killer cells (PMID: 1968349; 3109455; 10946284). CD18 plays an important role in mediating cell adhesion during immune response and defects of CD18 cause leukocyte adhesion deficiency (PMID: 3594570).

## Lagerung

Lagerungsbedingungen:

Store at 2-8°C. Avoid exposure to light. Stable for one year after shipment.

Lagerungspuffer:

PBS with 0.09% sodium azide and 0.5% BSA.

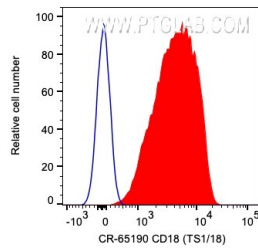
For technical support and original validation data for this product please contact:

T: 1 (888) 4PTGLAB (1-888-478-4522) (toll free  
in USA), or 1(312) 455-8498 (outside USA)

E: [proteintech@ptglab.com](mailto:proteintech@ptglab.com)  
W: [ptglab.com](http://ptglab.com)

This product is exclusively available under Proteintech Group brand and is not available to purchase from any other manufacturer.

## Ausgewählte Validierungsdaten



1X10<sup>6</sup> human PBMCs were surface stained with 5 ul Cardinal Red™ Anti-Human CD18 (CR-65190, Clone:TS1/18) (red) or Mouse IgG1 Isotype Control. Cells were not fixed. Lymphocytes were gated.