

Nur für Forschungszwecke

CD29 Monoklonaler Antikörper

Katalog-Nr.: CR-65191



Allgemeine Informationen

Katalog-Nr.: CR-65191	GenBank-Zugangsnummer: BC020057	Reinigungsmethode: Protein-G-Reinigung
Größe: 100tests , 5 µl/test	GeneID (NCBI): 3688	CloneNo.: TS2/16
Wirt: Maus	Vollständiger Name: integrin, beta 1 (fibronectin receptor, beta polypeptide, antigen CD29 includes MDF2, MSK12)	Anregungs-/Emissionsmaxima-Wellenlängen: 592 nm / 611 nm
Isotyp: IgG1, kappa	Berechnete Masse: 88 kDa	

Anwendungen

Geprüfte Anwendungen:
FC

Getestete Reaktivität:
Human

Hintergrundinformationen

Integrin beta-1 (ITGB1), also named as CD29, is a 130 kDa single chain type I glycoprotein that is expressed in a heterodimeric complex with one of six distinct α subunits, comprising the very late activation antigen (VLA) subfamily of adhesion receptors. It is one of the essential surface molecules expressed on human MSC from bone marrow and other sources. The β 1 subunit is also broadly expressed on lymphocytes and monocytes, weakly expressed on granulocytes, and not expressed on erythrocytes. These receptors are involved in a variety of cell-cell and cell-matrix interactions.

Lagerung

Lagerungsbedingungen:
Store at 2-8°C. Avoid exposure to light. Stable for one year after shipment.
Lagerungspuffer:
PBS with 0.09% sodium azide and 0.5% BSA.

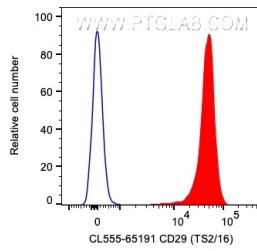
For technical support and original validation data for this product please contact:

T: 1 (888) 4PTGLAB (1-888-478-4522) (toll free in USA), or 1(312) 455-8498 (outside USA)

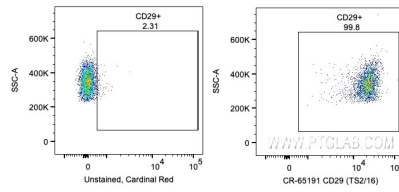
E: proteintech@ptglab.com
W: ptglab.com

This product is exclusively available under Proteintech Group brand and is not available to purchase from any other manufacturer.

Ausgewählte Validierungsdaten



1X10⁶ human PBMCs were surface stained with 5 ul Cardinal Red™ Anti-Human CD29 (CR-65191, Clone:TS2/16) (red) or unstained. Cells were not fixed. Monocytes were gated.



1X10⁶ human PBMCs were surface stained with 5 ul Cardinal Red™ Anti-Human CD29 (CR-65191, Clone:TS2/16) or unstained. Cells were not fixed. Monocytes were gated.