

Nur für Forschungszwecke

# ALCAM Monoklonaler Antikörper

Katalog-Nr.: CR-65223



## Allgemeine Informationen

<b>Katalog-Nr.:</b> CR-65223	<b>GenBank-Zugangsnummer:</b> BC057809	<b>Reinigungsmethode:</b> Affinitätsreinigung
<b>Größe:</b> 100tests , 5 µl/test	<b>GeneID (NCBI):</b> 214	<b>CloneNo.:</b> 3A6
<b>Wirt:</b> Maus	<b>Vollständiger Name:</b> activated leukocyte cell adhesion molecule	<b>Anregungs-/Emissionsmaxima-Wellenlängen:</b> 592 nm / 611 nm
<b>Isotyp:</b> IgG1, kappa	<b>Berechnete Masse:</b> 105 kDa	

## Anwendungen

**Geprüfte Anwendungen:**  
FC

**Getestete Reaktivität:**  
Human

## Hintergrundinformationen

Activated leukocyte cell adhesion molecule (ALCAM, also known as CD166) is a cell adhesion molecule that belongs to the immunoglobulin superfamily. It is involved in cell-cell adhesion through homophilic and heterophilic (to CD6) interactions. ALCAM is widely expressed in a variety of normal tissues and cell types, including activated T cells and monocytes, epithelial cells, fibroblasts, neuronal cells, hepatocytes, and bone marrow mesenchymal stem cells (PMID: 7760007; 25221999). Altered ALCAM expression has been associated with the differentiation state and progression in some neoplasms including melanoma, prostate, colorectal, and breast cancers (PMID: 20461761; 18172759).

## Lagerung

**Lagerungsbedingungen:**  
Store at 2-8°C. Avoid exposure to light. Stable for one year after shipment.  
**Lagerungspuffer:**  
PBS with 0.09% sodium azide and 0.5% BSA.

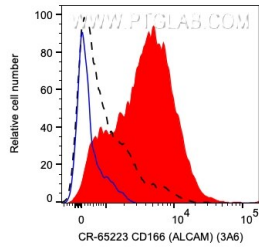
For technical support and original validation data for this product please contact:

T: 1 (888) 4PTGLAB (1-888-478-4522) (toll free in USA), or 1(312) 455-8498 (outside USA)

E: [proteintech@ptglab.com](mailto:proteintech@ptglab.com)  
W: [ptglab.com](http://ptglab.com)

This product is exclusively available under Proteintech Group brand and is not available to purchase from any other manufacturer.

## Ausgewählte Validierungsdaten



$1 \times 10^6$  PHA-treated (day 3) human PBMCs were surface stained with 5  $\mu$ l Cardinal Red™ Anti-Human ALCAM (CR-65223, Clone:3A6) (red), or unstained (blue). The black dashed line indicates unactivated PBMCs surface stained with 5  $\mu$ l Cardinal Red™ Anti-Human ALCAM (CR-65223, Clone:3A6). Cells were not fixed. Monocytes were gated.