

Nur für Forschungszwecke

CD85j / LILRB1 Monoklonaler Antikörper

Katalog-Nr.: CR-65238



Allgemeine Informationen

Katalog-Nr.:
CR-65238

Größe:
100tests, 5 ul/test

Wirt:
Maus

Isotyp:
IgG2b, kappa

GenBank-Zugangsnummer:
BC015731

GeneID (NCBI):
10859

Vollständiger Name:
leukocyte immunoglobulin-like
receptor, subfamily B (with TM and
ITIM domains), member 1

Berechnete Masse:
71 kDa

Reinigungsmethode:
N/A

CloneNo.:
GHI/75

Anregungs-/Emissionsmaxima-
Wellenlängen:
592 nm / 611 nm

Anwendungen

Geprüfte Anwendungen:
FC

Getestete Reaktivität:
Human

Hintergrundinformationen

Lagerung

Lagerungsbedingungen:

Store at 2-8°C. Avoid exposure to light. Stable for one year after shipment.

Lagerungspuffer:

PBS with 0.09% sodium azide and 0.5% BSA.

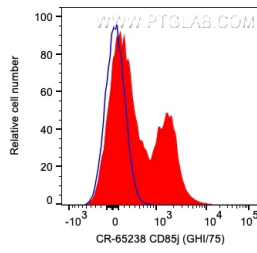
For technical support and original validation data for this product please contact:

T: 1 (888) 4PTGLAB (1-888-478-4522) (toll free
in USA), or 1(312) 455-8498 (outside USA)

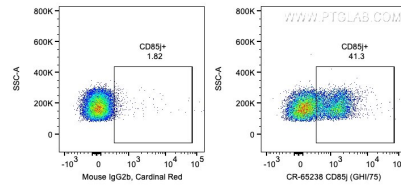
E: proteintech@ptglab.com
W: ptglab.com

This product is exclusively available under Proteintech Group brand and is not available to purchase from any other manufacturer.

Ausgewählte Validierungsdaten



1X10⁶ human PBMCs were surface stained with 5 ul Cardinal Red™ Anti-Human CD85j / LILRB1 (CR-65238, Clone:GHI/75) (red) or Mouse IgG2b Isotype Control. Cells were not fixed. Lymphocytes were gated.



1X10⁶ human PBMCs were surface stained with 5 ul Cardinal Red™ Anti-Human CD85j / LILRB1 (CR-65238, Clone:GHI/75) or Mouse IgG2b Isotype Control. Cells were not fixed. Lymphocytes were gated.