

Nur für Forschungszwecke

# CD226 Monoklonaler Antikörper

Katalog-Nr.: CR-65247



## Allgemeine Informationen

<b>Katalog-Nr.:</b> CR-65247	<b>GenBank-Zugangsnummer:</b> BC074787	<b>Reinigungsmethode:</b> N/A
<b>Größe:</b> 100tests, 5 µl/test	<b>GeneID (NCBI):</b> 10666	<b>CloneNo.:</b> 11A8
<b>Wirt:</b> Maus	<b>Vollständiger Name:</b> CD226 molecule	<b>Anregungs-/Emissionsmaxima-Wellenlängen:</b> 592 nm / 611 nm
<b>Isotyp:</b> IgG1, kappa	<b>Berechnete Masse:</b> 336 aa, 39 kDa	

## Anwendungen

**Geprüfte Anwendungen:**  
FC  
**Getestete Reaktivität:**  
Human

## Hintergrundinformationen

CD226 (DNAM-1) is a ~65 kDa glycoprotein expressed on the surface of NK cells, platelets, monocytes and a subset of T cells. It is a member of the Ig-superfamily containing 2 Ig-like domains of the V-set. CD226 mediates cellular adhesion of platelets and megakaryocytic cells to vascular endothelial cells. The protein also plays a role in megakaryocytic cell maturation. Interactions of CD226 and its ligands, CD155 and CD112, induce NK and T cell-mediated cytotoxicity and cytokine secretion (PMID: 15039383).

## Lagerung

**Lagerungsbedingungen:**  
Store at 2-8°C. Avoid exposure to light. Stable for one year after shipment.  
**Lagerungspuffer:**  
PBS with 0.09% sodium azide and 0.5% BSA.

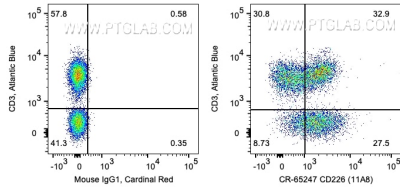
For technical support and original validation data for this product please contact:

T: 1 (888) 4PTGLAB (1-888-478-4522) (toll free in USA), or 1(312) 455-8498 (outside USA)

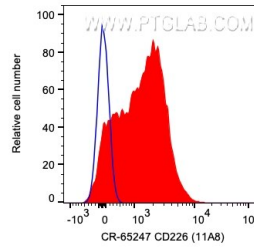
E: [proteintech@ptglab.com](mailto:proteintech@ptglab.com)  
W: [ptglab.com](http://ptglab.com)

This product is exclusively available under Proteintech Group brand and is not available to purchase from any other manufacturer.

## Ausgewählte Validierungsdaten



1X10<sup>6</sup> human PBMCs were surface co-stained with Atlantic Blue Anti-Human CD3 and 5 ul Cardinal Red™ Anti-Human CD226 (CR-65247, Clone:11A8) or Mouse IgG1 Isotype Control. Cells were not fixed. Lymphocytes were gated.



1X10<sup>6</sup> human PBMCs were surface stained with 5 ul Cardinal Red™ Anti-Human CD226 (CR-65247, Clone:11A8) or Mouse IgG1 Isotype Control. Cells were not fixed. Lymphocytes were gated.