

Nur für Forschungszwecke

CD26 Monoklonaler Antikörper

Katalog-Nr.: CR-65267



Allgemeine Informationen

Katalog-Nr.:
CR-65267

Größe:
100tests, 5 µl/test

Wirt:
Maus

Isotyp:
IgG2a, kappa

GenBank-Zugangsnummer:
BC013329

GeneID (NCBI):
1803

Vollständiger Name:
dipeptidyl-peptidase 4

Berechnete Masse:
88 kDa

Reinigungsmethode:
Affinitätsreinigung

CloneNo.:
BA5b

Anregungs-/Emissionsmaxima-
Wellenlängen:
592 nm / 611 nm

Anwendungen

Geprüfte Anwendungen:
FC

Getestete Reaktivität:
Human

Hintergrundinformationen

Lagerung

Lagerungsbedingungen:

Store at 2-8°C. Avoid exposure to light. Stable for one year after shipment.

Lagerungspuffer:

PBS with 0.09% sodium azide and 0.5% BSA.

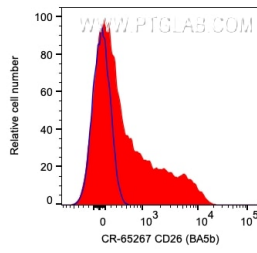
For technical support and original validation data for this product please contact:

T: 1 (888) 4PTGLAB (1-888-478-4522) (toll free
in USA), or 1(312) 455-8498 (outside USA)

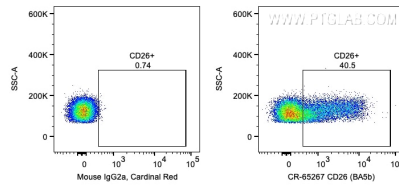
E: proteintech@ptglab.com
W: ptglab.com

This product is exclusively available under Proteintech Group brand and is not available to purchase from any other manufacturer.

Ausgewählte Validierungsdaten



1X10⁶ human PBMCs were surface stained with 5 ul Cardinal Red™ Anti-Human CD26 (CR-65267, Clone:BA5b) (red) or Mouse IgG2a Isotype Control (66360-2-Ig, Clone: K11A1B2A2). Cells were not fixed.



1X10⁶ human PBMCs were surface stained with 5 ul Cardinal Red™ Anti-Human CD26 (CR-65267, Clone:BA5b) or Mouse IgG2a Isotype Control. Cells were not fixed. Lymphocytes were gated.