

Nur für Forschungszwecke

IgG1 Isotype Control Monoklonaler Antikörper



Katalog-Nr.: CR-66360-1

Allgemeine Informationen

Katalog-Nr.:
CR-66360-1

Größe:
100ug, Konzentration: 200 µg/ml von
Nanodrop;

Wirt:
Maus

Isotyp:
IgG1

GenBank-Zugangsnummer:

GeneID (NCBI):

Vollständiger Name:

Reinigungsmethode:

Protein-G-Reinigung

CloneNo.:

1F8D3

Anregungs-/Emissionsmaxima-
Wellenlängen:

592 nm / 611 nm

Anwendungen

Geprüfte Anwendungen:

FC

Getestete Reaktivität:

Megathura Crenulata

Hintergrundinformationen

This antibody is used as the isotype control of mouse IgG1 (Kappa). It can be used as the isotype control in Flow Cytometry, Immuno-Precipitation and other experiments. The immunogen of this antibody is Keyhole Limpet Hemocyanin (KLH).

Lagerung

Lagerungsbedingungen:

Store at 2-8°C. Avoid exposure to light. Stable for one year after shipment.

Lagerungspuffer:

PBS with 0.09% sodium azide and 0.5% BSA.

***** 20ul-Größen enthalten 0.1% BSA**

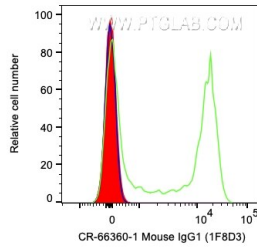
For technical support and original validation data for this product please contact:

T: 1 (888) 4PTGLAB (1-888-478-4522) (toll free
in USA), or 1(312) 455-8498 (outside USA)

E: proteintech@ptglab.com
W: ptglab.com

This product is exclusively available under Proteintech Group brand and is not available to purchase from any other manufacturer.

Ausgewählte Validierungsdaten



1X10⁶ human PBMCs were surface stained with 0.5 ug Cardinal Red™ Anti-Mouse IgG1 isotype control (CR-66360-1, Clone:1F8D3) (red), Cardinal Red™ Anti-Human CD45RA (green), or unstained (blue). Cells were not fixed. Lymphocytes were gated.