

Nur für Forschungszwecke

Rabbit IgG control Polyklonaler Antikörper

Katalog-Nr.: FITC-30000



Allgemeine Informationen

Katalog-Nr.:

FITC-30000

GenBank-Zugangsnummer:

GeneID (NCBI):

Reinigungsmethode:

N/A

Größe:

100ul, Konzentration: 1000 µg/ml von Nanodrop;

Vollständiger Name:

Anregungs-/Emissionsmaxima-Wellenlängen:

494 nm / 520 nm

Wirt:

Kaninchen

Isotyp:

IgG

Anwendungen

Geprüfte Anwendungen:

FC

Getestete Reaktivität:

Hintergrundinformationen

This product is Normal rabbit IgG (without immunized) which purified with Protein A. Normal Rabbit IgG is an isotype control antibody, which is used to estimate the non-specific binding of target primary antibodies due to Fc receptor binding or other protein-protein interactions. An isotype control antibody should have the same immunoglobulin type and be used at the same concentration as the test antibody.

Lagerung

Lagerungsbedingungen:

Bei -20°C lagern. Vor Licht schützen. Nach dem Versand ein Jahr stabil.

Lagerungspuffer:

BS mit 50% Glycerin, 0,05% Proclin300, 0,5% BSA, pH 7,3.

Aliquotieren ist nicht notwendig bei -20°C Lagerung

*** 20ul-Größen enthalten 0.1% BSA

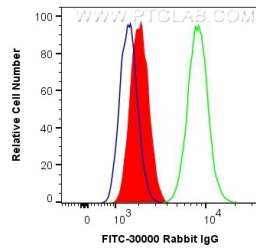
For technical support and original validation data for this product please contact:

T: 1 (888) 4PTGLAB (1-888-478-4522) (toll free in USA), or 1(312) 455-8498 (outside USA)

E: proteintech@ptglab.com
W: ptglab.com

This product is exclusively available under Proteintech Group brand and is not available to purchase from any other manufacturer.

Ausgewählte Validierungsdaten



1X10⁶ HeLa cells were intracellularly stained with 0.5 ug FITC Anti-Rabbit IgG control (FITC-30000) (red), or 0.5 ug FITC Anti-Human ATF4 (FITC-10835) (green), or unstained (blue). Cells were fixed with 4% PFA and permeabilized with Intracellular Staining Permeabilization Wash Buffer.