

Nur für Forschungszwecke

CD106 Monoklonaler Antikörper

Katalog-Nr.: FITC-65049

1 Publikationen



Allgemeine Informationen

Katalog-Nr.: FITC-65049	GenBank-Zugangsnummer: BC017276	Reinigungsmethode: Affinitätsreinigung
Größe: 100tests , 10 µl/test	GeneID (NCBI): 7412	CloneNo.: 1.G11B1
Wirt: Maus	Vollständiger Name: vascular cell adhesion molecule 1	Anregungs-/Emissionsmaxima-Wellenlängen: 494 nm / 520 nm
Isotyp: IgG1	Berechnete Masse: 739 aa, 81 kDa	

Anwendungen

Geprüfte Anwendungen:
FC

In Publikationen genannte Anwendungen:
FC

Getestete Reaktivität:
Human

Zitierte Arten:
Human

Hintergrundinformationen

Vascular cell adhesion molecule 1 (VCAM1), also known as CD106, is a 110-kDa transmembrane glycoprotein belonging to the immunoglobulin gene superfamily. VCAM1 is expressed by cytokine-activated endothelium, interacts with integrin VLA4 ($\alpha 4\beta 1$) present on the surface of leukocytes, and mediates both adhesion and signal transduction. It is also expressed either constitutively or inducibly in a variety of other cell types, including vascular smooth muscle cells, differentiating skeletal muscle cells, renal and neural epithelial cells, macrophages (Kupffer cells), dendritic cells, and bone marrow stromal cells (PMID: 7507076, 11359843).

Bemerkenswerte Veröffentlichungen

Verfasser	Pubmed ID	Journal	Anwendung
Bairong Fang	36786974	J Physiol Biochem	FC

Lagerung

Lagerungsbedingungen:
Bei 2-8°C lagern. Vor Licht schützen.

Lagerungspuffer:
PBS mit 0,1% Natriumazid.

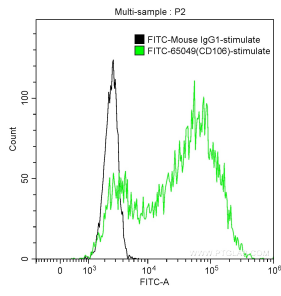
For technical support and original validation data for this product please contact:

T: 1 (888) 4PTGLAB (1-888-478-4522) (toll free in USA), or 1(312) 455-8498 (outside USA)

E: proteintech@ptglab.com
W: ptglab.com

This product is exclusively available under Proteintech Group brand and is not available to purchase from any other manufacturer.

Ausgewählte Validierungsdaten



1X10⁶ TNF-alpha treated HUVEC cells were surface stained with 10 ul FITC Anti-Human CD106 (FITC-65049, Clone: 1.G11B1) (green) or FITC-Mouse IgG1 isotype control (black). Cells were not fixed.