

Nur für Forschungszwecke

CD3ε Monoklonaler Antikörper

Katalog-Nr.: FITC-65060

4 Publikationen



Allgemeine Informationen

Katalog-Nr.: FITC-65060	GenBank-Zugangsnummer: BC098236	Reinigungsmethode: Affinitätsreinigung
Größe: 100µg, 0.1 mg/ml	GeneID (NCBI): 12501	CloneNo.: 145-2C11
Wirt: hamster	Vollständiger Name: CD3 antigen, epsilon polypeptide	Anregungs-/Emissionsmaxima- Wellenlängen: 494 nm / 520 nm
Isotyp: IgG		

Anwendungen

Geprüfte Anwendungen:
FC

In Publikationen genannte Anwendungen:
FC

Getestete Reaktivität:
Maus

Zitierte Arten:
Maus

Hintergrundinformationen

CD3 is a multimeric protein associated with the T-cell receptor (TCR) to form a complex involved in antigen recognition and signal transduction (PMID: 15885124). CD3 is composed of CD3γ, δ, ε, and ζ chains (PMID: 1826255). It is expressed by thymocytes in a developmentally regulated manner, T cells, and some NK cells (PMID: 3289580). The TCR recognizes antigens bound to major histocompatibility complex (MHC) molecules. TCR-mediated peptide-MHC recognition is transmitted to the CD3 complex, leading to the intracellular signal transduction (PMID: 11985657).

Bemerkenswerte Veröffentlichungen

Verfasser	Pubmed ID	Journal	Anwendung
Dingyi Wang	35236203	Drug Deliv	FC
Xudong Fan	36382303	Asian J Pharm Sci	FC
Yunkai Shang	37192052	ACS Nano	FC

Lagerung

Lagerungsbedingungen:
Store at 2-8°C. Avoid exposure to light. Stable for one year after shipment.

Lagerungspuffer:
PBS mit 0,1% Natriumazid.

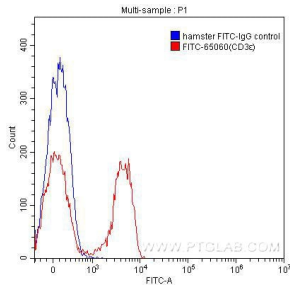
For technical support and original validation data for this product please contact:

T: 1 (888) 4PTGLAB (1-888-478-4522) (toll free in USA), or 1(312) 455-8498 (outside USA)

E: proteintech@ptglab.com
W: ptglab.com

This product is exclusively available under Proteintech Group brand and is not available to purchase from any other manufacturer.

Ausgewählte Validierungsdaten



1X10⁶ C57BL/6 mouse splenocytes were surface stained with 0.20 ug FITC-Anti-Mouse CD3ε (FITC-65060, clone 145-2C11) (red) or 0.20 ug FITC-Hamster IgG isotype control (blue). Cells were not fixed.