

Nur für Forschungszwecke

# FceR1 Monoklonaler Antikörper

Katalog-Nr.:FITC-65091



## Allgemeine Informationen

|                                    |  |  |
|------------------------------------|--|--|
| <b>Katalog-Nr.:</b><br>FITC-65091  | <b>GenBank-Zugangsnummer:</b><br>BC125455  | <b>Reinigungsmethode:</b><br>Affinitätsreinigung                   |
| <b>Größe:</b><br>100ug , 500 µg/ml | <b>GeneID (NCBI):</b><br>14125   | <b>CloneNo.:</b><br>MAR-1  |
| <b>Wirt:</b><br>Armenian Hamster   | <b>Vollständiger Name:</b><br>Fc receptor, IgE, high affinity I, alpha polypeptide | <b>Anregungs-/Emissionsmaxima-Wellenlängen:</b><br>495 nm / 524 nm |
| <b>Isotyp:</b><br>IgG              |  |  |

## Anwendungen

**Geprüfte Anwendungen:**  
FC

**Getestete Reaktivität:**  
Maus

## Hintergrundinformationen

Fc epsilon Receptor I alpha (FceR1a) is a single-pass type I membrane protein which contains 2 immunoglobulin-like domains. FceR1a forms a tetrameric complex with one beta and two gamma subunits (PMID: 19406478). FceR1 is the high-affinity receptor for the Fc region of immunoglobulin E (IgE) (PMID: 1532373). It is expressed on mast cells and basophils and plays a central role in the allergic response (PMID: 2148316).

## Lagerung

**Lagerungsbedingungen:**  
Store at 2-8°C. Avoid exposure to light. Stable for one year after shipment.

**Lagerungspuffer:**  
PBS with 0.09% sodium azide.

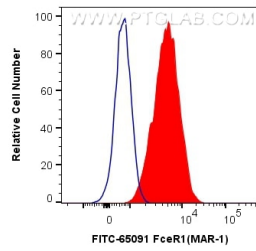
For technical support and original validation data for this product please contact:

T: 1 (888) 4PTGLAB (1-888-478-4522) (toll free in USA), or 1(312) 455-8498 (outside USA)

E: [proteintech@ptglab.com](mailto:proteintech@ptglab.com)  
W: [ptglab.com](http://ptglab.com)

This product is exclusively available under Proteintech Group brand and is not available to purchase from any other manufacturer.

## Ausgewählte Validierungsdaten



1X10<sup>6</sup> MC/9 cells were surface stained with 0.5 ug FITC Plus Anti-Mouse FcεR1 (FITC-65091, Clone:MAR-1) (red), or 0.5 ug Isotype Control. Cells were not fixed.