

Nur für Forschungszwecke

# CD161 Monoklonaler Antikörper

Katalog-Nr.: FITC-65115



## Allgemeine Informationen

Katalog-Nr.:

FITC-65115

Größe:

100tests, 5 µl/test

Wirt:

Maus

Isotyp:

IgG1, kappa

GenBank-Zugangsnummer:

BC114516

GeneID (NCBI):

3820

Vollständiger Name:

killer cell lectin-like receptor  
subfamily B, member 1

Berechnete Masse:

225 aa, 25 kDa

Reinigungsmethode:

Affinitätsreinigung

CloneNo.:

HP-3G10

Anregungs-/Emissionsmaxima-  
Wellenlängen:

494 nm / 520 nm

## Anwendungen

Geprüfte Anwendungen:

FC

Getestete Reaktivität:

Human

## Hintergrundinformationen

### Lagerung

Lagerungsbedingungen:

Store at 2-8°C. Avoid exposure to light. Stable for one year after shipment.

Lagerungspuffer:

Phosphatbasierter Puffer mit 0,09% Natriumazid und 0,1% Gelatine, pH 7,2.

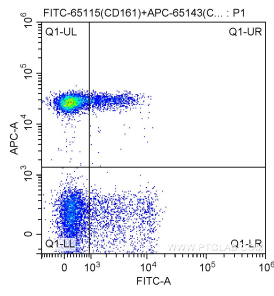
For technical support and original validation data for this product please contact:

T: 1 (888) 4PTGLAB (1-888-478-4522) (toll free  
in USA), or 1(312) 455-8498 (outside USA)

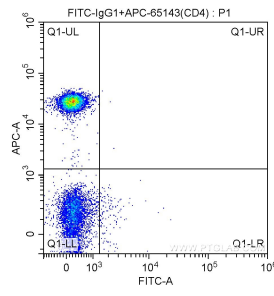
E: [proteintech@ptglab.com](mailto:proteintech@ptglab.com)  
W: [ptglab.com](http://ptglab.com)

This product is exclusively available under Proteintech Group brand and is not available to purchase from any other manufacturer.

## Ausgewählte Validierungsdaten



1X10<sup>6</sup> human peripheral blood lymphocytes were surface stained with 0.50 ug APC Anti-Human CD4 APC-65143, Clone: RPA-T4) and 0.50 ug FITC Anti-Human CD161 (FITC-65115, Clone: HP-3G10). Cells were not fixed.



1X10<sup>6</sup> human peripheral blood lymphocytes were surface stained with 0.50 ug APC Anti-Human CD4 (APC-65143, Clone: RPA-T4) and 0.50 ug FITC-mouse IgG1 isotype control. Cells were not fixed.