

Nur für Forschungszwecke

NK1.1 (CD161) Monoklonaler Antikörper

Katalog-Nr.: FITC-65138



Allgemeine Informationen

Katalog-Nr.:
FITC-65138

Größe:
100µg, 0.5 mg/ml

Wirt:
Maus

Isotyp:
IgG2a

GenBank-Zugangsnummer:
BC120707

GeneID (NCBI):
17057

Vollständiger Name:
killer cell lectin-like receptor
subfamily B member 1A

Reinigungsmethode:
Affinitätsreinigung

CloneNo.:
PK136

Anregungs-/Emissionsmaxima-
Wellenlängen:
494 nm / 520 nm

Anwendungen

Geprüfte Anwendungen:
FC

Getestete Reaktivität:
Maus

Hintergrundinformationen

NK1.1 (CD161), also known as KLRB1 or NKR-P1A, is a type II transmembrane C-type lectin-like receptor and is expressed on the cell membrane as disulfide-linked homodimer (PMID: 8077657). It is expressed by the majority of NK cells and subsets of peripheral T cells, including both CD4+ and CD8+ T cells, and is expressed preferentially on adult T cells with a "memory" antigenic phenotype (PMID: 8077657; 22566826). Expression of CD161 correlates with the cytotoxic function of CD16+ NK cells, and ligation of CD161 with its ligand LLT1 inhibits NK cell cytotoxicity and cytokine secretion (PMID: 29686665).

Lagerung

Lagerungsbedingungen:

Bei 2-8°C lagern. Vor Licht schützen.

Lagerungspuffer:

Phosphatbasierter Puffer mit 0,09% Natriumazid und 0,1% Gelatine, pH 7,2.

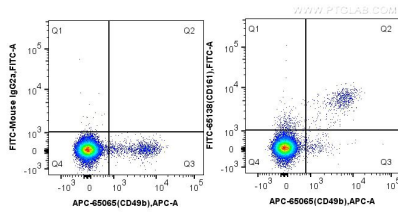
For technical support and original validation data for this product please contact:

T: 1 (888) 4PTGLAB (1-888-478-4522) (toll free
in USA), or 1(312) 455-8498 (outside USA)

E: proteintech@ptglab.com
W: ptglab.com

This product is exclusively available under Proteintech Group brand and is not available to purchase from any other manufacturer.

Ausgewählte Validierungsdaten



1x10⁶ mouse splenocytes were surface stained with APC Anti-Mouse CD49b (DX5) (APC-65065, Clone: DX5) and FITC Mouse IgG2a isotype control antibody (left) or 0.5 µg FITC Anti-Mouse NK1.1 (CD161) (FITC-65138, Clone: PK136) (right). Cells were not fixed.