

Nur für Forschungszwecke

Integrin beta-7 Monoklonaler Antikörper

Katalog-Nr.: FITC-65213



Allgemeine Informationen

Katalog-Nr.:

FITC-65213

Größe:

100tests, 5 µl/test

Wirt:

Ratte

Isotyp:

IgG2a, kappa

GenBank-Zugangsnummer:

BC011184

GeneID (NCBI):

16421

Vollständiger Name:

integrin beta 7

Reinigungsmethode:

Protein-A-Reinigung

CloneNo.:

FIB504

Anregungs-/Emissionsmaxima-Wellenlängen:

495 nm / 524 nm

Anwendungen

Geprüfte Anwendungen:

FC

Getestete Reaktivität:

Human, Maus

Hintergrundinformationen

Lagerung

Lagerungsbedingungen:

Store at 2-8°C. Avoid exposure to light. Stable for one year after shipment.

Lagerungspuffer:

PBS with 0.09% sodium azide and 0.5% BSA.

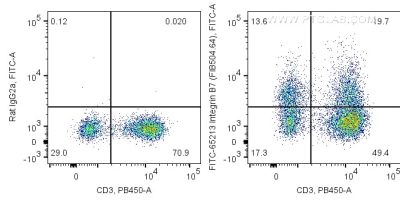
For technical support and original validation data for this product please contact:

T: 1 (888) 4PTGLAB (1-888-478-4522) (toll free in USA), or 1(312) 455-8498 (outside USA)

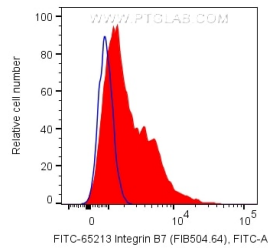
E: proteintech@ptglab.com
W: ptglab.com

This product is exclusively available under Proteintech Group brand and is not available to purchase from any other manufacturer.

Ausgewählte Validierungsdaten



1X10⁶ human PBMCs were surface co-stained with Anti-Human CD3 and 5 ul FITC Plus Anti-Human/Mouse Integrin beta-7 (FITC-65213, Clone:FIB504), or Rat IgG2a Isotype Control. Cells were not fixed. Lymphocytes were gated.



1X10⁶ human PBMCs were surface stained with 5 ul FITC Plus Anti-Human/Mouse Integrin beta-7 (FITC-65213, Clone:FIB504), or Rat IgG2a Isotype Control. Cells were not fixed. Lymphocytes were gated.