

Nur für Forschungszwecke

HLA-DR Monoklonaler Antikörper

Katalog-Nr.: FITC-65218

1 Publikationen



Allgemeine Informationen

Katalog-Nr.:

FITC-65218

Größe:

100tests, 5 µl/test

Wirt:

Maus

Isotyp:

IgG2a, kappa

GenBank-Zugangsnummer:

BC032350

GeneID (NCBI):

3122

Vollständiger Name:

major histocompatibility complex,
class II, DR alpha

Berechnete Masse:

254 aa, 29 kDa

Reinigungsmethode:

Protein-A-Reinigung

CloneNo.:

L243

Anregungs-/Emissionsmaxima-

Wellenlängen:

495 nm / 524 nm

Anwendungen

Geprüfte Anwendungen:

FC

In Publikationen genannte Anwendungen:

FC

Getestete Reaktivität:

Human

Zitierte Arten:

Human

Hintergrundinformationen

Bemerkenswerte Veröffentlichungen

Verfasser

Qingxi Qu

Pubmed ID

36359787

Journal

Cells

Anwendung

FC

Lagerung

Lagerungsbedingungen:

Store at 2-8°C. Avoid exposure to light. Stable for one year after shipment.

Lagerungspuffer:

PBS with 0.09% sodium azide and 0.5% BSA.

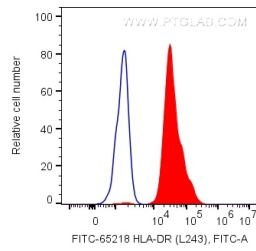
For technical support and original validation data for this product please contact:

T: 1 (888) 4PTGLAB (1-888-478-4522) (toll free
in USA), or 1(312) 455-8498 (outside USA)

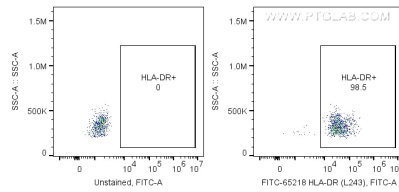
E: proteintech@ptglab.com
W: ptglab.com

This product is exclusively available under Proteintech Group brand and is not available to purchase from any other manufacturer.

Ausgewählte Validierungsdaten



1X10⁶ human PBMCs were surface stained with 5 ul FITC Plus Anti-Human HLA-DR (FITC-65218, Clone: L243). Cells were not fixed. Monocytes were gated.



1X10⁶ human PBMCs were surface stained with 5 ul FITC Plus Anti-Human HLA-DRA (FITC-65218, Clone:L243). Cells were not fixed .