

Nur für Forschungszwecke

ALCAM Monoklonaler Antikörper

Katalog-Nr.: FITC-65223



Allgemeine Informationen

Katalog-Nr.: FITC-65223	GenBank-Zugangsnummer: BC057809	Reinigungsmethode: Affinitätsreinigung
Größe: 100tests , 5 µl/test	GeneID (NCBI): 214	CloneNo.: 3A6
Wirt: Maus	Vollständiger Name: activated leukocyte cell adhesion molecule	Anregungs-/Emissionsmaxima-Wellenlängen: 495 nm / 524 nm
Isotyp: IgG1, kappa	Berechnete Masse: 105 kDa	

Anwendungen

Geprüfte Anwendungen:
FC

Getestete Reaktivität:
Human

Hintergrundinformationen

Activated leukocyte cell adhesion molecule (ALCAM, also known as CD166) is a cell adhesion molecule that belongs to the immunoglobulin superfamily. It is involved in cell-cell adhesion through homophilic and heterophilic (to CD6) interactions. ALCAM is widely expressed in a variety of normal tissues and cell types, including activated T cells and monocytes, epithelial cells, fibroblasts, neuronal cells, hepatocytes, and bone marrow mesenchymal stem cells (PMID: 7760007; 25221999). Altered ALCAM expression has been associated with the differentiation state and progression in some neoplasms including melanoma, prostate, colorectal, and breast cancers (PMID: 20461761; 18172759).

Lagerung

Lagerungsbedingungen:
Store at 2-8°C. Avoid exposure to light. Stable for one year after shipment.
Lagerungspuffer:
PBS with 0.09% sodium azide and 0.5% BSA.

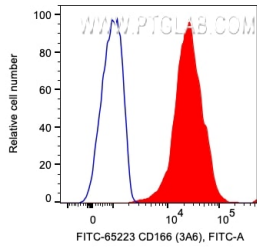
For technical support and original validation data for this product please contact:

T: 1 (888) 4PTGLAB (1-888-478-4522) (toll free in USA), or 1(312) 455-8498 (outside USA)

E: proteintech@ptglab.com
W: ptglab.com

This product is exclusively available under Proteintech Group brand and is not available to purchase from any other manufacturer.

Ausgewählte Validierungsdaten



1X10⁶ PHA-activated human PBMCs were surface stained with 5 ul FITC Plus Anti-Human ALCAM (FITC-65223, Clone:3A6). Cells were not fixed. Monocytes were gated.