

Nur für Forschungszwecke

LRP1 Monoklonaler Antikörper

Katalog-Nr.: FITC-65233



Allgemeine Informationen

Katalog-Nr.:

FITC-65233

Größe:

100tests , 5 µl/test

Wirt:

Maus

Isotyp:

IgG2b

GenBank-Zugangsnummer:

BC045107

GeneID (NCBI):

4035

Vollständiger Name:

low density lipoprotein-related protein 1 (alpha-2-macroglobulin receptor)

Berechnete Masse:

505 kDa

Reinigungsmethode:

Affinitätsreinigung

CloneNo.:

5A6

Anregungs-/Emissionsmaxima-Wellenlängen:

495 nm / 524 nm

Anwendungen

Geprüfte Anwendungen:

FC

Getestete Reaktivität:

Human

Hintergrundinformationen

Lagerung

Lagerungsbedingungen:

Store at 2-8°C. Avoid exposure to light. Stable for one year after shipment.

Lagerungspuffer:

PBS with 0.09% sodium azide.

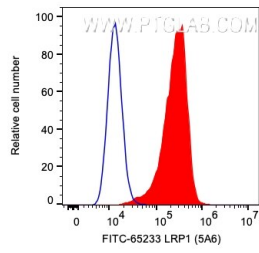
For technical support and original validation data for this product please contact:

T: 1 (888) 4PTGLAB (1-888-478-4522) (toll free in USA), or 1(312) 455-8498 (outside USA)

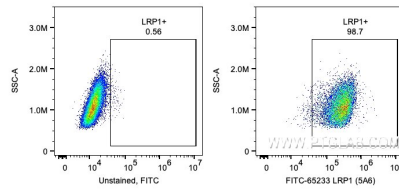
E: proteintech@ptglab.com
W: ptglab.com

This product is exclusively available under Proteintech Group brand and is not available to purchase from any other manufacturer.

Ausgewählte Validierungsdaten



1X10⁶ U-87 MG cells were surface stained with 5 ul FITC Plus Plus Anti-Human LRP1 (FITC-65233, Clone:5A6) or unstained. Cells were not fixed.



1X10⁶ U-87 MG cells were surface stained with 5 ul FITC Plus Plus Anti-Human LRP1 (FITC-65233, Clone:5A6) or unstained. Cells were not fixed.