

Nur für Forschungszwecke

# CD85j / LILRB1 Monoklonaler Antikörper

Katalog-Nr.: FITC-65238



## Allgemeine Informationen

Katalog-Nr.:  
FITC-65238

Größe:  
100tests, 5 µl/test

Wirt:  
Maus

Isotyp:  
IgG2b, kappa

GenBank-Zugangsnummer:  
BC015731

GeneID (NCBI):  
10859

Vollständiger Name:  
leukocyte immunoglobulin-like  
receptor, subfamily B (with TM and  
ITIM domains), member 1

Berechnete Masse:  
71 kDa

Reinigungsmethode:  
Affinitätsreinigung

CloneNo.:  
GHI/75

Anregungs-/Emissionsmaxima-  
Wellenlängen:  
495 nm / 524 nm

## Anwendungen

Geprüfte Anwendungen:  
FC

Getestete Reaktivität:  
Human

## Hintergrundinformationen

### Lagerung

Lagerungsbedingungen:

Store at 2-8°C. Avoid exposure to light. Stable for one year after shipment.

Lagerungspuffer:

PBS with 0.09% sodium azide and 0.5% BSA.

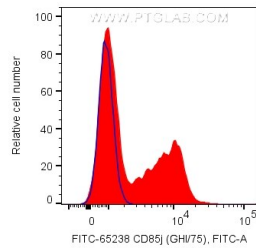
For technical support and original validation data for this product please contact:

T: 1 (888) 4PTGLAB (1-888-478-4522) (toll free  
in USA), or 1(312) 455-8498 (outside USA)

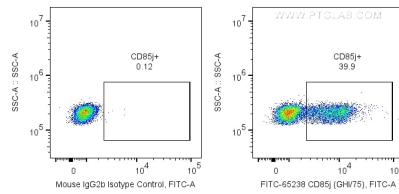
E: [proteintech@ptglab.com](mailto:proteintech@ptglab.com)  
W: [ptglab.com](http://ptglab.com)

This product is exclusively available under Proteintech Group brand and is not available to purchase from any other manufacturer.

## Ausgewählte Validierungsdaten



1X10<sup>6</sup> human PBMCs were surface stained with 5 ul FITC Plus Anti-Human CD85j (LILRB1) (FITC-65238, Clone:GHI/75), or Mouse IgG2b Isotype Control. Cells were not fixed. Lymphocytes were gated.



1X10<sup>6</sup> human PBMCs were surface stained with 5 ul FITC Plus Anti-Human CD85j (LILRB1) (FITC-65238, Clone: GHI/75), or Mouse IgG2b Isotype Control. Cells were not fixed. Lymphocytes were gated.