

Nur für Forschungszwecke

IgG2a isotype control Monoklonaler Antikörper



Katalog-Nr.: FITC-66360-2

Allgemeine Informationen

Katalog-Nr.:

FITC-66360-2

GenBank-Zugangsnummer:

GeneID (NCBI):

Reinigungsmethode:

Protein-A-Reinigung

Größe:

100ug, Konzentration: 200 µg/ml von
Nanodrop;

Vollständiger Name:

CloneNo.:

11A1B2

Wirt:

Maus

Anregungs-/Emissionsmaxima-
Wellenlängen:

495 nm / 524 nm

Isotyp:

IgG2a

Anwendungen

Geprüfte Anwendungen:

FC

Getestete Reaktivität:

Megathura Crenulata

Hintergrundinformationen

This antibody is used as the isotype control of mouse IgG2a. It can be used as the isotype control in Flow Cytometry and other experiments. The immunogen of this antibody is Keyhole Limpet Hemocyanin (KLH).

Lagerung

Lagerungsbedingungen:

Store at 2-8°C. Avoid exposure to light. Stable for one year after shipment.

Lagerungspuffer:

PBS with 0.09% sodium azide and 0.5% BSA.

***** 20ul-Größen enthalten 0.1% BSA**

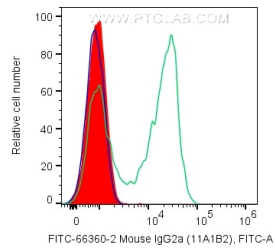
For technical support and original validation data for this product please contact:

T: 1 (888) 4PTGLAB (1-888-478-4522) (toll free
in USA), or 1(312) 455-8498 (outside USA)

E: proteintech@ptglab.com
W: ptglab.com

This product is exclusively available under Proteintech Group brand and is not available to purchase from any other manufacturer.

Ausgewählte Validierungsdaten



1X10⁶ human PBMCs were surface stained with 0.2 ug FITC Plus Mouse IgG2a isotype control (FITC-66360-2, Clone:11A1B2) (filled red), Anti-Human CD5 (green), or unstained (blue). Cells were not fixed. Lymphocytes were gated.